



# PATENTED CLEAN SOLUTION - ROUND AND SPECIAL SHAPE PUNCH

Speed and innovation set our Greenlee products apart. With Speed Punch and Slug Splitter, you can work quickly and precisely in any application. Our commitment to your work.



### In brief

- ▶ Long service life
- ▶ For aluminium and steel to 3.5 mm thick
- ▶ Threadless profile for quick replacement
- ▶ No jamming of the slug
- ▶ Threads require no maintenance

**▶ Quick punching with Speed Punch**

We make you faster. Time-saving operations are really easy with the Speed Punch profile. The threadless stamp profile is quickly changed via clamp technology - no more screwing the counter nut off and on! Which also means: Threads are care and maintenance-free. Punching is up to three-times quicker than before.

- Quick punching system: Punching up to 3 x quicker
- For aluminium and steel up to 3.5 mm thick
- Innovative clamp technology
- No more screwing the counter nut off and on
- Threads are now care and maintenance-free

**▶ Slug Splitter: Automatic clean punching**

We make it easy for you. The Slug Splitter separates punched slug remnants. You can fully concentrate on punching stainless steel, without delays due to time-consuming removal of punched slug remnants.

- Splits the punches into two parts for direct removal of punch slug remnants
- Longest service life due to high-quality stainless steel
- Slug-Splitter: Suitable for use with all Greenlee punching hydraulics



**▶ Square punch: Special-shaped punches**

Displays and panels require appropriate square-shaped punching. The special punching stamp from Greenlee punches stainless steel and mild steel without leaving burrs. High-quality tool steel meets your requirements - in proven Greenlee quality.

- For mild steel (St37), plastic and aluminium to 3.0 mm thick and V2A stainless steel up to 1.5 mm
- Burr-free punching of display panels
- High-quality tool steel





## Standard punch systems



### ► Ball bearing draw stud reduces operating force

#### Suitable for

- Mild steel (St37), plastic and aluminium up to 3.5 mm

#### Operation

- Manual / hydraulic

#### Predrilling

- Draw stud 9.5 mm dia., pilot drill 9.7 mm diameter 50360183  
Draw stud 11.1 mm dia., pilot drill 12.7 mm dia. 50344102  
draw stud 19.0 mm dia., pilot drill 20.5 mm diameter 50344030

#### Scope of supply

- Complete system including punch, die and draw stud for manual operation

#### Additional information

- \* 50042181 Draw stud without ball-bearing
- \*\* 52085634 only for 22.5mm / Pg16, 2.5mm mild steel and 2mm V2A

Punch size			Max. Material thickness	Individual parts for manual operation					Draw studs + Accessories for hydraulic units				Complete unit
True dimension	Standard size			mm (St37)	Punch	Die	Draw stud with ball bearing	Ball bearing nut	Spacer	Draw studs		Accessories	
	mm	Pg	ISO							Hand hydraulic 7804E, 7904E	Battery powered punch LS 50	Hydr. pump 52084920, 52084941 LS100F LEX	Adapter sleeves 9,5/ 19,0 for 51300430
12.7	Pg 7		1.5	50069969	50042351	50042181							<b>50024086</b>
14.3			1.5	50042300	50042297	50042181							<b>50024337</b>
15.2	Pg 9		2.0	50213164	50320025	50000420							<b>50211153</b>
15.9			1.5	50042238	50042246	50042181						50339672	<b>50024094</b>
16.2		ISO 16	2.0		50351621	50000420			51300430	51300430	52042827	50339672	<b>50351923</b>
18.6			2.0	50177001	50320033	50000420			51300430	51300430	52042827	50339672	<b>50188860</b>
19.1			2.0			50000420			51300430	51300430	52042827	50339672	<b>50206672</b>
20.4	Pg 13	ISO 20	2.0	50176978	50320041	50000420			51300430	51300430	52042827	50339672	<b>50188879</b>
20.6			2.0	50042262	50042254	50000420			51300430	51300430	52042827	50339672	<b>50206680</b>
22.5	Pg16		2.5	52085632	52085629	52085686			52085690	52085690	52085689		<b>52085634</b>
22.5	Pg 16		3.5	51040060	51147220	50000420			51300430	51300430	52042827	50339672	<b>50225634</b>
23.8			2.0	50042386	50042378	50000420			51300430	51300430	52042827	50339672	<b>50253417</b>
25.4		ISO 25	2.0	50039865	50351648	50000420			51300430	51300430	52042827	50339672	<b>50206702</b>
27.0			2.0	50042408	50042424	50000420			51300430	51300430	52042827	50339672	<b>50253425</b>
28.3	Pg 21		3.5	51040080	51069720	50040405			52085691	52085691	52085692	50339672	<b>50225642</b>
28.3	Pg 21		2.0	50368826	50320068	50000420			51300430	51300430	51300430	50339672	<b>50369105</b>
28.6			2.0	50039903	50039911	50000420			51300430	51300430	51300430	50339672	<b>50206710</b>
30.5			1.5	50362828	50362798	50000420			51300430	51300430	51300430	50339672	<b>50365061</b>
31.8			1.5			50000420			51300430	51300430	51300430	50339672	<b>50206737</b>
32.5	Pg 32		3.5	50244590	50351680	50040405			52085691	52085691	52085692		<b>50244760</b>
33.4			1.5		50065866	50000420			52085691	52085691	52085692		<b>50253441</b>

Punch size			Max. Material thickness	Individual parts for manual operation					Draw studs + Accessories for hydraulic units				Complete unit	
True dimension	Standard size			mm (St37)	Punch	Die	Draw stud with ball bearing	Ball bearing nut	Spacer	Draw studs		Accessories		Part No.
	mm	Pg	ISO							Hand hydraulic 7804E, 7904E	Battery powered punch LS 50	Hydr. pump 50159062 50250973 LS100F LEX	Adapter sleeves 19,0 / 28,6	
34.6			3.5	50040103	50040111	50040405				52085691	52085691	52085692		<b>50225650</b>
34.9			3.5	50047345	50047353	50040405				52085691	52085691	52085692		<b>50254278</b>
37.0	Pg 29		3.5	50183311	50320084	50040405				52085691	52085691	52085692		<b>50188909</b>
38.1			3.5	50047361	50070444	50040405				52085691	52085691	52085692		<b>50254286</b>
40.5	ISO 40		3.5	50244620	50351591	50040405				52085691	52085691	52085692		<b>50244779</b>
41.3			3.5	50042513	50042505	50040405				52085691	52085691	52085692		<b>50253492</b>
43.2			3.5	51069740	50040138	50040405				52085691	52085691	52085692		<b>50225669</b>
44.5			3.5	50042572	50042564	50040405				52085691	52085691	52085692		<b>50253506</b>
47.0			3.5	50176870	51320090	52085688				52085691	52085691	52085692		<b>50188917</b>
47.6			3.5	50042483	50042491	52085688				52085691	52085691	52085692		<b>50253514</b>
49.6			3.5		50040618	52085688				52085691	52085691	52085692		<b>50225677</b>
50.8	ISO 50		3.5	50042327	50351613	52085688				52085691	52085691	52085692		<b>50206761</b>
54.0	Pg 42		3.5	50042459	50361732	52085688				52085691	52085691	52085692		<b>50206788</b>
57.2			3.5	50040588	50040596	52085688				52085691	52085691	52085692		<b>50253603</b>
60.0	Pg 48		3.5	50176900	50320114	52085688				52085691	52085691	52085692		<b>50188925</b>
61.5			3.5	52085670	52085666	52085688				52085691	52085691	52085692		<b>52085672</b>
63.5	ISO 63		3.5	50042343	50042335	50041886				52085691	52085691	52085692		<b>50206796</b>
66.7			3.5	50042521	50069977	50041886	50041878				52085692	52085692		<b>50212141</b>
69.9			3.5	50042475	50042467	50041886	50041878				52085692	52085692		<b>50253611</b>
70.6			3.5	50024450	50024434	50041886	50041878				52085692	52085692		<b>50253832</b>
74.0			3.5	52085674	52085673	52085694	50046853				52093902	52085693		<b>52085675</b>
76.2			3.5	50042599	50042580	50041886	50041878				52093902	52085693		<b>50253727</b>
79.4			3.5	50063634	50063626	50041886	50041878				52093902	52085693		<b>50254030</b>
82.0			3.5	50189050	50189069	50041886	50041878				52093902	52085693		<b>50186353</b>
89.8			3.5	52085677	52085676	52085694	50046853				52093902	52085693		<b>52085678</b>
95.3			3.5	50052659	50052667	50041886	50041878	50046861			52085692	52085692	50031708	<b>50212168</b>
102.7			3.5	52085680	52085679	52085694	50046853	50046861			52093902	52085693	50031708	<b>52085681</b>
115.4			3.5	52085683	52085682	52085694	50046853	50046861			52093902	52085693	50031708	<b>52085684</b>
120.0			3.5	50214896	50214918	52085694	50046853	50046861			52093902	52085693	50031708	<b>50215191</b>
143.7			3.5	50054473	50054481	52085694	50046853	50046861			52093902	52085693	50031708	<b>50199803</b>



## Slug Buster® punch system



- ▶ For quick, clean, effortless and burr-free holes
- ▶ Split slugs fall free and can be removed easily

### Suitable for

- Mild steel (St37), plastic and aluminium up to 3.5 mm

### Operation

- Manual / hydraulic

### Predrilling






- Draw stud 9.5 mm dia., pilot drill 9.7 mm diameter 50360183  
Draw stud 11.1 mm dia., pilot drill 12.7 mm dia. 50344102  
draw stud 19.0 mm dia., pilot drill 20.5 mm diameter 50344030

### Scope of supply

- Complete system including punch, die and draw stud for manual operation

### Additional information

- \* 50042181 Draw stud without ball-bearing
- \*\* 52085633 only for 22.5mm / Pg16, 2.5mm mild steel and 2mm V2A
- \*\*\* 50339672 Adapter 9.5mm /19mm for draw stud 51300430

Punch size			Max. Material thickness	Individual parts for manual operation			Draw studs + Accessories for hydraulic units		Complete unit
True dimension	Standard size								
mm	Pg	ISO	mm (St37)	Punch	Die	Draw stud with ball bearing	Hand hydraulic Quick Draw Battery hydraulics LS50FLEX	Hand hydraulic 52084941, 52084920 Battery hydraulics LS100Flex	Part No.
12.5	Pg 7	ISO 12	1.5	50067281	50067290	50042181			<b>50067273</b>
15.2	Pg 9		2.0	50319698	50320025	50000420	51300430	52042827	<b>50319892</b>
16.2		ISO 16	2.0	50351630	50351621	50000420	51300430	52042827	<b>50351770</b>
18.6	Pg 11		2.0	50319701	50320033	50000420	51300430	52042827	<b>50319906</b>
20.4	Pg 13	ISO 20	2.0	50319710	50320041	50000420	51300430	52042827	<b>50319914</b>
22.5	Pg 16		2.0	50317563	51147220	50000420	51300430	52042827	<b>50319620</b>
22.5	Pg 16		2.5	52085631	52085629	52085686	52085690	52085689	<b>52085633</b>
25.4		ISO 25	2.0	50351656	50351648	50000420	51300430	52042827	<b>50351788</b>
28.3	Pg 21		3.0	50317571	51069720	50040405	50318721	52045040	<b>50319639</b>
28.3	Pg 21		2.0	50319736	50320068	50000420	52085691	52042827	<b>50319930</b>
30.5			2.0	50362844	50362798	50000420	51300430	52042827	<b>50365088</b>
30.5			3.5		50362780	50040405	52085691	52085692	<b>50602462</b>
32.5		ISO 32	3.5	50351699	50351680	50040405	52085691	52085692	<b>50351796</b>
34.6			3.5		50040111	50040405	52085691	52085692	<b>50319647</b>
37.0	Pg 29		3.5	50319752	50320084	50040405	52085691	52085692	<b>50319957</b>
40.5		ISO 40	3.5	50351583	50351591	50040405	52085691	52085692	<b>50351800</b>
43.2			3.5		50040138	50040405	52085691	52085692	<b>50319655</b>
47.0	Pg 36		3.5	51319760	51320090	52085688	52085691	52085692	<b>50319965</b>
49.6			3.5		50040618	52085688	52085691	52085692	<b>50319663</b>
50.8		ISO 50	3.5	50351605	50351613	52085688	52085691	52085692	<b>50351818</b>
54.0	Pg 42		3.5	50361724	50361732	52085688	52085691	52085692	<b>50361716</b>
60.0	Pg 48		3.5	50319787	50320114	52085688	52085691	52085692	<b>50319981</b>
61.5			3.5	52085668	52085666	52085688	52085691	52085692	<b>52085671</b>
64.0		ISO 63	3.5		50351664	52085688	52085691	52085692	<b>50351826</b>

## SLUG SPLITTER® punch system (stainless steel)



- ▶ Special alloy for maximum service life
- ▶ Split slugs fall free and can be disposed of easily

### Suitable for

- Stainless steel (V2A), mild steel (St37), plastic and aluminium up to 3.5 mm thick

### Operation

- Hydraulic

### Predrilling




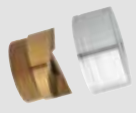
- Draw stud 11.1 mm dia., pilot drill 12.7 mm diameter 50344102  
draw stud 19.0 mm dia., pilot drill 20.5 mm diameter 50344030

### Scope of supply

- Complete system including punch and die

### Additional information

- \* = Slug Splitter SC® - self-centring

Punch size			Max. Material thickness	Individual parts for manual operation		Draw studs	Complete unit
True dimension	Standard size						
	mm	Pg	ISO	mm (V2A)	Punch	Die	Pump, hand and battery powered
15.2	Pg 9		2.5	50311174	50311263	50294512	<b>50069519</b>
16.2		ISO 16	2.5	50045997	50045989	50294512	<b>50069527</b>
18.6	Pg 11		2.5	50311190	50311280	50294512	<b>50069535</b>
20.4	Pg 13	ISO 20	2.5	50311204	50311298	50294512	<b>50069543</b>
22.5	Pg 16		3.5	50281542	50281550	50294512	<b>50069551</b>
25.4		ISO 25	3.5	50046020	50046012	50294512	<b>50069560</b>
28.3	Pg 21		3.5	50281569	50281577	50294520	<b>50069578</b>
30.5			3.5	50364901	50364898	50294520	<b>50069586</b>
32.5		ISO 32	3.5	50046055	50046039	50294520	<b>50069594</b>
34.6			3.5	50281585	50281593	50294520	
37.0	Pg 29		3.5	50311220	50311352	50294520	<b>50069608</b>
40.5		ISO 40	3.5	50046080	50046071	50294520	<b>50069616</b>
43.2			3.5	50281607	50281615	50294520	
47.0	Pg 36		3.5	50311239	50311310	50294520	<b>50069624</b>
49.6			3.5	50281623	50281631	50294520	
50.8		ISO 50	3.5	50046110	50046098	50294520	<b>50069632</b>
54.0	Pg 42		3.5	50311247	50311328	50294520	<b>50069640</b>
60.0	Pg 48		3.5	50311255	50311336	50294520	<b>50069659</b>
61.5			3.5	50281658	50281666	50294520	
64.0		ISO 63	3.5	50046144	50046136	50294520	<b>50069667</b>



### Speed Punch™ punch system



- ▶ Innovative threadless punch profile
- ▶ Easy and quick handling as the screwing and unscrewing of the counter nut is not required

#### Suitable for

- Mild steel (St37), plastic and aluminium up to 3.5 mm

#### Operation

- Hydraulic

#### Predrilling

- Draw stud 9.5 mm dia.; pilot drill 9.7 mm dia.  
draw stud 19.0 mm dia.; pilot drill 20.5 mm dia.

#### Scope of supply

- Complete system including punch and die

#### Additional information

- Counter nuts and draw studs must be ordered separately, they are not included in scope of supply
- Draw stud for LS100Flex, manual hydraulics 1725 and 767  
Speed Punch™ draw stud 19 mm to 9.5 mm for ISO 16/20/25 and PG16 Part-No. 52066000  
Speed Punch™ pull stud 19mm for ISO 16/20/25 and PG16 Part-No. 52058897

Punch size		Max. Material thickness	Individual parts		Draw studs	Speed lock	Complete unit	
True dimension	Standard size							
mm	PG	ISO	mm (St37)	Punch	Die	for LS50Flex and Quick Draw (not included)	(not included)	Part No.
16.2		ISO 16	3.5	52066021	52066022	52066001	52066002	<b>52055431</b>
20.4	PG 13	ISO 20	3.5	52066023	52066024	52066001	52066002	<b>52055432</b>
22.5	PG 16		3.5	52065998	52065999	52066001	52066002	<b>52055433</b>
25.4		ISO 25	3.5	52066025	52066026	52066001	52066002	<b>52055434</b>
32.5		ISO 32	3.5	52066027	52066028	52047818	52047817	<b>52055435</b>
40.5		ISO 40	3.5	52066029	52066030	52047818	52047817	<b>52055436</b>
50.8		ISO 50	3.5	52066031	52066032	52047818	52047817	<b>52055437</b>
64.0		ISO 63	3.5	52066033	52066034	52047818	52047817	<b>52055438</b>

Accessories	Part No.	Page
Speed Punch™ Speed lock and draw stud 9.5 mm for ISO 16/20/25 and PG 16	52055439	
Speed Punch™ Speed lock and draw stud 19.0 mm for ISO 32/40/50/63	52055440	



## Draw studs with manual drivers

► High wear resistance

**Order info**

- To increase the service life, we recommend greasing the draw studs with Greenlee installation paste no. 50115472
- Sizes given are diameter x length
- Subject to tolerance deviations



Size	Part No.
9.5 x 40 mm	<b>50000420</b>



Size	Part No.
6.5 x 35 mm	<b>50042181</b>



Size	Part No.
11.1 mm x 76 mm	<b>52085686</b>



Size	Part No.
28.6 x 190 mm	<b>52085694</b>



Size	Part No.
19 x 140 mm	<b>50041886</b>



Size	Part No.
19 x 87 mm	<b>52085688</b>



Size	Part No.
19 x 55 mm	<b>50040405</b>





# Punching

Round and special shape punches

## Draw studs for hydraulic drivers

### Order info

- To increase the service life, we recommend greasing the draw studs with Greenlee installation paste no. 50115472
- Sizes given are diameter x length
- Subject to tolerance deviations
- Draw stud long, for use with LS100Flex, 767 and 1725 hydraulics (746A punching head)
- Draw stud short, for use with LS50Flex, 767 and Quick Draw hydraulics



Size	Part No.
19 x 28,6 x 143 mm (long)	<b>52085693</b>
19 x 28,6 x 124mm (short)	<b>52093902</b>



Size	Part No.
9.5 x 71 mm	<b>51300430</b>



Size	Part No.
11.1 mm x 19mm, 108 mm (short)	<b>52085690</b>
11.1 mm x 19 mm, 127mm (long)	<b>52085689</b>



Size	Part No.
Adapter 19 mm to 28.6 mm	<b>50031708</b>



Adapter

Size	Part No.
19 x 48 mm (Inside 9.5 mm)	<b>50339672</b>
19 x 48 mm (Inside 6.3 mm)	<b>50601148</b>
19 x 48 mm (Inside 12.7 mm)	<b>50601679</b>



Size	Part No.
19 x 122 mm (short)	<b>52085691</b>
19 x 143 mm (long)	<b>52085692</b>



Size	Part No.
19 x 140 mm for Slug Splitter®	<b>50294520</b>



Size	Part No.
11.1 x 108 mm for Slug Splitter®	<b>50294512</b>



Size	Part No.
9.5 mm x 19 mm, 122 mm	<b>52042827</b>

## Rectangular punch



### Suitable for

- Mild steel (St37), plastic and aluminium to 3.0 mm and V2A 1.5 mm
- Punching of burr-free openings

### Operation

- Manual / hydraulic

### Predrilling




- 9.7 mm dia. pilot drill 50360183
- 12.7 mm dia. pilot drill 50344102
- 15.9 mm dia. pilot drill 50344030
- 30.2 mm dia. 50364146

### Scope of supply

- Punch unit including punch, die, draw stud, counter nut and ball-bearing nut

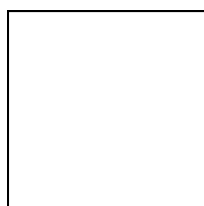
### Additional information

- \* = only for use with hydraulic punch drivers 52084920, 52084941, LS60L and LS50FLEX
- \*\* = only for use with hydraulic punch drivers 52084920, 52084941 and LS50FLEX

Punch size A x B	Max. Material thick- ness	Operating mode	Individual parts f. manual operation			Adapter for hydr. punch driver	Mounting hole-dia.	Complete unit
								
11.1 x 22.2	1.5	Hand/Hydr.	50601156	50601202	50052446	50601148	9.7	<b>50600257</b>
17.0 x 19.0	2.0	Hand/Hydr.	52020113	50347330	50046381	50339672	12.7	<b>50610281</b>
19.1 x 29.0	2.0	Hand/Hydr.	50601172	50601652	50602586	50601679	15.9	<b>50600311</b>
19.1 x 33.3	2.0	Hand/Hydr.	50601172	50601652	50602586	50601679	15.9	<b>50600346</b>
21.9 x 25.9	2.0	Hand/Hydr.	50601172	50601652	50602586	50601679	15.9	<b>50600370</b>
22.0 x 30.0	2.0	Hand/Hydr.	50601172	50601652	50602586	50601679	15.9	<b>50600400</b>
22.0 x 42.0	2.0	Hand/Hydr.	50184369	50601652	50602586	50601679	15.9	<b>50600435</b>
25.1 x 29.0	2.0	Hand/Hydr.	50601172	50601652	50602586	50601679	15.9	<b>50600478</b>
31.8 x 35.1	2.0	Hand/Hydr.	50184369	50601652	50602586	50601679	15.9	<b>50600508</b>
29.0 x 71.0	3.0	Hydr.	52045298		52046101		28.6	<b>52045296</b>
30.0 x 90.0	3.0	Hydr.	52045298		52046101		28.6	<b>52045297</b>
33.3 x 66.7	3.0	Hydr.	52046100		52046101		30.2	<b>50600532</b>
35.0 x 52.0	3.0	Hydr.	52046100		52046101		30.2	<b>50600567</b>
35.0 x 65.0	3.0	Hydr.	52046100		52046101		30.2	<b>50600591</b>
35.0 x 82.0	2.0	Hydr.*	52046100		52046101		30.2	<b>50600621</b>
35.0 x 112.0	2.0	Hydr.*	52046100		52046101		30.2	<b>50600656</b>
46.0 x 92.0	3.0	Hydr.*	52046100		52046101		30.2	<b>50600680</b>
57.2 x 88.9	3.0	Hydr.*	52046100		52046101		30.2	<b>50600710</b>
68.0x138.0	2.0	Hydr.**	52046100		52046101		30.2	<b>50600745</b>



### Square punch



#### Suitable for

- Mild steel (St37), plastic and aluminium to 3.0 mm and V2A 1.5 mm
- Punching of burr-free openings

#### Operation

- Manual / hydraulic

#### Predrilling

- 9.7 mm dia. pilot drill 50360183
- 12.7 mm dia. pilot drill 50344102
- 15.9 mm dia. pilot drill 50344030
- 30.2 mm dia. 50364146

#### Scope of supply

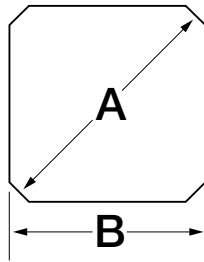
- Punch unit including punch, die, draw stud, counter nut and ball-bearing nut

#### Additional information

- \* = only for use with hydraulic punch drivers 52084920, 52084941, LS50 Flex and LS100 Flex
- \*\* = only for use with hydraulic punch drivers 52084920, 52084941 and LS100Flex

Punch size A x B	Max. Material thickness	Operating mode	Individual parts for manual operation			Adapter for hydr. punch driver	Mounting hole-dia. mm	Complete unit
			Draw studs	Ball bearing nut	Counter nut			
mm	mm (St37)					Part No.	mm	Part No.
12.7 x 12.7	1.5	Hand/Hydr.	50601156	50601202	50052446	50601148	9.5	<b>50600010</b>
15.9 x 15.9	2.0	Hand/Hydr.	52020113	50347330	50046381	50339672	12.7	<b>50610045</b>
19.1 x 19.1	2.0	Hand/Hydr.	50184369	50347330	50602586	50339672	12.7	<b>50610076</b>
22.4 x 22.4	2.0	Hand/Hydr.	50184369	50347330	50602586	50339672	12.7	<b>50610106</b>
24.0 x 24.0	2.0	Hand/Hydr.	52020113	50347330	50046381	50339672	12.7	<b>50610137</b>
25.4 x 25.4	2.0	Hand/Hydr.	50601172	50601652	50602586	50601679	15.9	<b>50600168</b>
45.0 x 45.0	3.0	Hydr.	52046100		52046101		30.2	<b>50115723</b>
46.0 x 46.0	3.0	Hydr.	52046100		52046101		30.2	<b>50600192</b>
50.8 x 50.8	3.0	Hydr.	52046100		52046101		30.2	<b>50601687</b>
68.0 x 68.0	3.0	Hydr.	52046100		52046101		30.2	<b>50601717</b>
92.0 x 92.0	3.0	Hydr.*	52046100		52046101		30.2	<b>50601741</b>
104.8 x 104.8	2.0	Hydr.*	52046100		52046101		30.2	<b>50601776</b>
138.0 x 138.0	2.0	Hydr.**	52055901				30.2	<b>50602349</b>

## Special square punch with flattened corners



### Suitable for

- Mild steel (St37), plastic and aluminium to 2.0 mm
- Punching of burr-free openings

### Operation

- Manual / hydraulic

### Predrilling

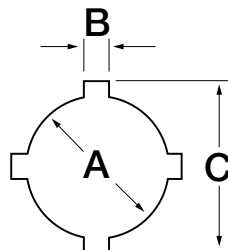
- 12.7 mm dia. pilot drill 50344102

### Scope of supply

- Punch unit including punch, die, draw stud, counter nut and ball-bearing nut

Punch size A x B	Max. Material thickness	Operating mode	Individual parts for manual operation			Adapter for hydr. punch driver	Mounting hole-dia. mm	Complete unit
			Draw studs	Ball bearing nut	Counter nut			
mm	mm (St37)					Part No.	mm	Part No.
22.5 x 20.1	2.0	Hand/Hydr.	50184369	50347330	50602586	50339672	12.7	<b>50611257</b>

## Round punch with four anti-rotation tabs



### Suitable for

- Mild steel (St37), plastic and aluminium to 3.0 mm

### Operation

- Manual / hydraulic

### Predrilling

- 15.9 mm dia. pilot drill 50344030

### Scope of supply

- Punch unit including punch, die, draw stud, counter nut and ball-bearing nut

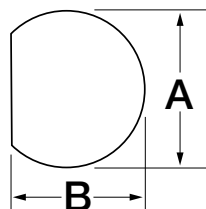
Punch size A x B	Max. Material thickness	Operating mode	Individual parts for manual operation			Adapter for hydr. punch driver	Mounting hole-dia. mm	Complete unit
			Draw studs	Ball bearing nut	Counter nut			
mm	mm (St37)					Part No.	mm	Part No.
22.5 x 3.2 x 25.4	2.0	Hand/Hydr.	50184369	50601652	50602586	50601679	15.9	<b>50602381</b>
30.5 x 4.8 x 36.0	3.0	Hand/Hydr.	50184369	50601652	50602586	50601679	15.9	<b>50602420</b>



# Punching

Round and special shape punches

## „D“ shaped punch



### Suitable for

- Mild steel (St37), plastic and aluminium to 2.0 mm

### Operation

- Manual / hydraulic

### Predrilling

- 12.7 dia. mm pilot drill 50344102

### Scope of supply

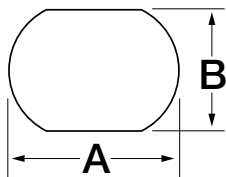
- Punch unit including punch, die, draw stud, counter nut and ball-bearing nut

### Additional information

- \* 50610809 and 50610830 available only as punch unit

Punch size A x B	Max. Material thickness	Operating mode	Individual parts for manual operation			Adapter for hydr. punch driver	Mounting hole-dia. mm	Complete unit
			Draw studs	Ball bearing nut	Counter nut			
mm	mm (St37)					Part No.	mm	Part No.
12.7 x 11.9	2.0	Hand/Hydr.	50601156	50601202	50052446	50601148	9.5	<b>50600770</b>
15.9 x 15.1	2.0	Hand/Hydr.	50344218	50347330	50046381	50339672	12.7	<b>50610809</b>
19.1 x 17.9	2.0	Hand/Hydr.	50344218	50347330	50046381	50339672	12.7	<b>50610830</b>

## Double „D“ shaped punch



### Suitable for

- Mild steel (St37), plastic and aluminium to 2.0 mm

### Operation

- Manual / hydraulic

### Predrilling

- 15.9 mm dia. pilot drill 50344030

### Scope of supply

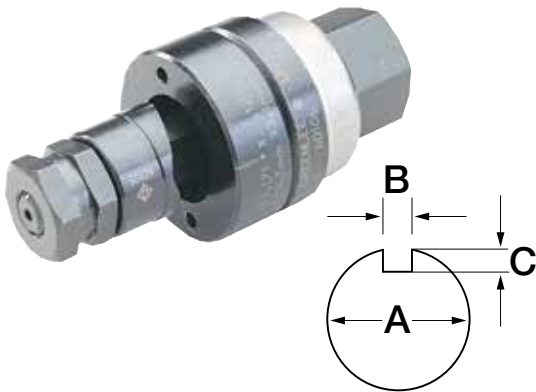
- Punch unit including punch, die, draw stud, counter nut and ball-bearing nut

### Additional information

- All punches available only as punch unit

Punch size A x B	Max. Material thickness	Operating mode	Individual parts for manual operation			Adapter for hydr. punch driver	Mounting hole-dia. mm	Complete unit
			Draw studs	Ball bearing nut	Counter nut			
mm	mm (St37)					Part No.	mm	Part No.
19.5 x 16.3	2.0	Hand/Hydr.	52020113	50347330	50046381	50339672	12.7	<b>50610861</b>
20.2 x 17.6	2.0	Hand/Hydr.	52020113	50347330	50046381	50339672	12.7	<b>50610892</b>
23.2 x 19.2	2.0	Hand/Hydr.	52020113	50347330	50046381	50339672	12.7	<b>50610922</b>
23.2 x 20.2	2.0	Hand/Hydr.	52020113	50347330	50046381	50339672	12.7	<b>50610953</b>
34.9 x 28.6	2.0	Hand/Hydr.	50601660	50601652	50602586	50601679	23.8	<b>50600982</b>

## Keyway punch



### Suitable for

- Mild steel (St37), plastic and aluminium to 2.0 mm

### Operation

- Manual / hydraulic

### Predrilling

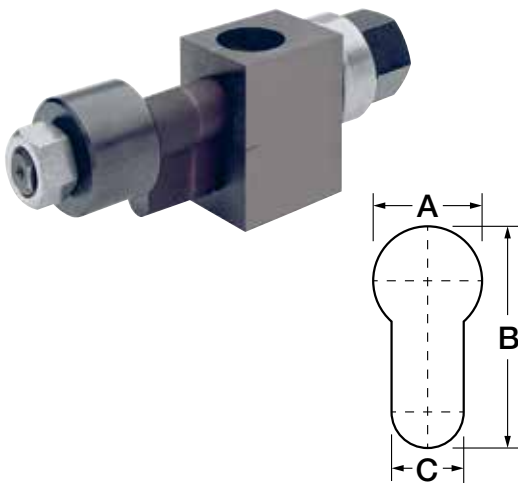
- 23.8 mm dia. pilot drill 50300083

### Scope of supply

- Punch unit including punch, die, draw stud, counter nut and ball-bearing nut

Punch size A x B x C	Max. Material thickness	Operating mode	Individual parts for manual operation			Adapter for hydr. punch driver	Mounting hole-dia. mm	Komplettlocher
			Draw studs	Ball bearing nut	Counter nut			
mm	mm (St37)					Part No.	mm	Art.-Nr.
12.2 x 1.4 x 0.8	1.5	Hand/Hydr.	50601156	50601202	50052446	50601148	9.5	<b>50601016</b>

## Profile cylinder punch



### Suitable for

- Mild steel (St37) up to 2.0 mm and aluminium up to 3.5 mm thick

### Operation

- Manual / hydraulic

### Predrilling

- 12.7 mm dia. pilot drill 50344102

### Scope of supply

- Punch unit including punch, die, draw stud, counter nut and ball-bearing nut

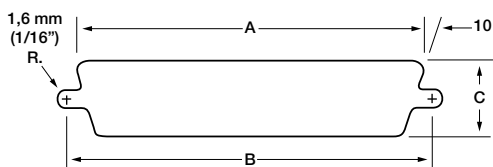
Punch size A x B x C	Max. Material thickness	Operating mode	Individual parts for manual operation				Adapter for hydr. punch driver	Mounting hole-dia. mm	Komplettlocher
			Draw studs	Ball bearing nut	Counter nut	Spacer bushing			
mm	mm (St37)						Part No.	mm	Art.-Nr.
17.0 x 33.3 x 10.5	2.0	Hand/Hydr.	50053043	50347330	90500113	50053051	50339672	12.7	<b>50053078</b>



# Punching

Round and special shape punches

## Sub-Min „D“ punch



### Suitable for

- Mild steel (St37) up to 2.0 mm and aluminium up to 3.5 mm thick
- Front or rear mounting

### Operation

- Manual / hydraulic

### Predrilling

- 12.7 mm dia. pilot drill 50344102

### Scope of supply

- Punch unit including punch, die, draw stud, counter nut and ball-bearing nut

Standard	Number Pole	Operating mode	Dimension			Individual parts for manual operation			Adapter for hydr. punch driver	Complete unit
			A mm	B mm	C mm	Draw studs	Ball bearing nut	Counter nut	Part No.	Part No.
229	9	Hand/hydr.	20.0	24.9	11.9	52020113	50347330	50046381	50339672	<b>50344366</b>
231	15	Hand/hydr.	28.6	33.3	11.9	52020113	50347330	50046381	50339672	<b>50344374</b>
RS232	25	Hand/hydr.	42.0	47.1	11.9	52020113	50347330	50046381	50339672	<b>50344200</b>
234	37	Hand/hydr.	58.3	63.4	11.9	52020113	50347330	50046381	50339672	<b>50344293</b>
238	50	Hand/hydr.	55.9	61.0	14.7	52020113	50347330	50046381	50339672	<b>50344447</b>



## Special shape punch for heavy duty connectors with 4 centre mark points



### Characteristics

- Rectangular punches for heavy duty connectors feature a drilling jig built into the die, for drilling the 4 locating holes.

### Suitable for

- Mild steel (St37) to 3.0 mm thick and aluminium to 3.5 mm

### Operation

- Hydraulic

### Predrilling

- 30.2 mm dia. pilot drill 50364146

### Scope of supply

- Punch unit including punch, die, draw stud and counter nut

Item	Punch size A x B mm	Max. Material thickness mm	Operating mode	Individual parts for manual operation		Mounting hole-dia. mm	Complete unit Part No.
				Draw studs	Counter nut		
Special shaped punch for heavy duty connectors, 6-pin, 36 x 52 mm	36.0 x 52.0	3.0	Hydraulic	52046100	52046101	30.2	<b>52033816</b>
Special shaped punch for heavy duty connectors, 10-pin, 36 x 65 mm	36.0 x 65.0	3.0	Hydraulic	52046100	52046101	30.2	<b>52033817</b>
Special shaped punch for heavy duty connectors, 16-pin, 36 x 86 mm	36.0 x 86.0	3.0	Hydraulic	52046100	52046101	30.2	<b>52033818</b>
Special shaped punch for heavy duty connectors, 24-pin, 36 x 91 mm	36.0 x 91.0	3.0	Hydraulic	52046100	52046101	30.2	<b>52033819</b>
Special shaped punch for heavy duty connectors 36 x 112 mm	36.0 x 112.0	3.0	Hydraulic	52046100	52046101	30.2	<b>52033820</b>
Special shaped punch for heavy duty connectors 46 x 86 mm	46.0 x 86.0	3.0	Hydraulic	52046100	52046101	30.2	<b>52033831</b>
Special shaped punch for heavy duty connectors 46 x 112 mm	46.0 x 112.0	3.0	Hydraulic	52046100	52046101	30.2	<b>52033832</b>
Special shaped punch HAN Yellock® 30 with 4 centre mark points 47.2 x 85.5 mm	47.2 x 85.5	3.0 / 3.0 VA	Hydraulic	52046100	52046101	30.2	<b>52058592</b>



# Punching

Round and special shape punches

## Draw studs for shaped punch

### Order info

- To increase the service life, we recommend greasing the draw studs with Greenlee installation paste no. 50115472
- Sizes given are diameter x length
- Subject to tolerance deviations



Size	Part No.
19x150 mm	<b>52046100</b>



Size	Part No.
9.5 x 135 mm	<b>50053043</b>



Size	Part No.
12.7 x 117 mm	<b>50601172</b>



Size	Part No.
12.7 x 117 mm	<b>50601660</b>



Size	Part No.
6.3 x 87 mm	<b>50601156</b>



Size	Part No.
9.5 x 88 mm	<b>52020113</b>

# SAVE TIME AND MONEY - WITH EVERY PUNCH!

From the leaders in knockout technology comes the new SPEED PUNCH™ System. The patent pending “no-thread” design eliminates cross-threading, while the innovative SPEED LOCK mechanism quickly secures the punch in place. This means longer tool life and faster punches, saving you time and money on the job. SPEED PUNCH™ is available in ISO 16 to ISO 63 and PG 16 metric sizes and two kit configurations.



**UP TO  
3X  
FASTER**

**SPEED  
PUNCH**

## ▶ Speed Punch - saves time and money

- SPEED LOCK mechanism quickly secures the entire system in place: Punch more holes in less time.
- “No-thread” punch design quickly and easily slides on/off draw stud.
- The fastest punch system on the market today.
- Matched die heights eliminate need for additional spacers.
- Fewer extra parts to lose on the job site.
- No more thread damage and costly down time.

## ▶ Simplified punching processes

- Standard draw stud end
- Works with your existing hydraulic and battery-operated punch drivers.

### LS50 FLEX

- ▶ In combination with the hydraulic punching tool LS 50 Flex it represents the state of the art in performance and speed.