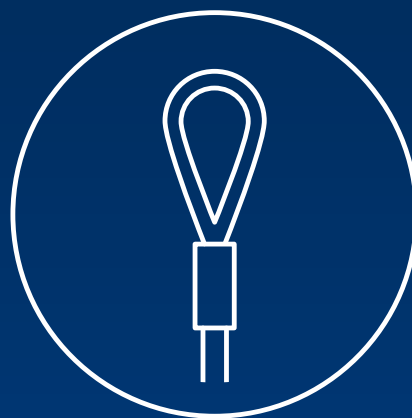


# PUTS CABLE WHERE IT NEEDS TO BE SIMPLY AND SAFELY.

Takes every corner flexibly and robustly – cable pulling technology from Greenlee is set apart by quality and the simplest operation possible for every challenge.





# Cable pulling technology

|   |            |
|---|------------|
| <b>Fish tapes/pulling rods</b>                        | <b>536</b> |
| Polyester   | 536        |
| Perlon  | 536        |
| Nylon   | 536        |
| Steel   | 537        |
| Flex-O-Twist speed flex leader                        | 537        |
| Fibreglass cable pulling rods                         | 537        |
| <b>Cable pulling systems</b>                          | <b>538</b> |
| With Polyester tapes (Dura Spinner and Flexi Spinner) | 538        |
| With fibreglass tapes (Speedy Spinner)                | 539        |
| Fish tapes in winder case                             | 540        |
| Smart Butler, Polyester Butler                        | 542        |
| <b>Cable puller</b>                                   | <b>544</b> |
| Easy Roller (cable drum unwinder), Easy Roller Plus   | 544        |
| Cable puller with accessory                           | 545        |
| <b>Pulling grips</b>                                  | <b>547</b> |
| Pulling grips, closed                                 | 547        |
| Pulling grips, open                                   | 548        |
| <b>Accessory</b>                                      | <b>549</b> |

# THE PULLING AID - CABLE PULLING TECHNOLOGY

Clean construction site - clean laying. Our cable pulling technology ensures that all cables are cleanly rolled in and out. No parts not required left lying around. No awkward handling. Greenlee pulling systems are made from high-quality ABS plastic. Making them robust and drop-proof. You are in control: Reliable laying with safe cable pulling technology.



#### In brief

- ▶ Simple pulling through of cables and conductors
- ▶ Cable puller made from polyester, perlon, nylon, steel and fibreglass
- ▶ Cable pulling rods for cavities and suspended ceilings
- ▶ Made from high-quality ABS plastic
- ▶ Solutions for light and heavy cable types, angled ducts or long straights



▶ **The Dura Spinner**

The Dura Spinner is small, but has a great effect. High-quality materials ensure robustness and the best functionality. Its user-friendly design also permits unwinding on the floor. The Dura Spinner is even able to hold in place cables that are laid around corners. A genuine help on the construction site.

- ABS plastic housing
- Cable puller made from virtually indestructible polyester tape
- Simple unwinding and rewinding
- Unwinding even on the floor
- User-friendly design ensures convenient and smooth operations



### Polyester fish tape green 4.5 mm dia.



- ▶ 50% less friction than nylon tapes
- ▶ Extremely flexible and almost unbreakable

#### Characteristics

- High thrust due to twisted tape design
- Reduces the pulling force due to much lower friction
- Replaceable pulling eyelet and spring guide head

#### Additional information

- Further detailed information can be found in the application table on page i-12

| Length | Part No.        | Diameter mm |
|--------|-----------------|-------------|
| 10 m   | <b>52055292</b> | 4.5         |
| 15 m   | <b>52055293</b> | 4.5         |
| 20 m   | <b>52055294</b> | 4.5         |
| 25 m   | <b>52055295</b> | 4.5         |
| 30 m   | <b>52055296</b> | 4.5         |

| Accessory  | Part No. |
|--|----------|
| 5-piece accessory set for polyester fish tapes       | 52055396 |
| Rotating spring guide head with eyelet, M5, 7 mm dia | 52055264 |

### Perlon® fish tape 4 mm dia.



#### Characteristics

- With pressed M4 front piece
- With unscrewable spring guide head and pulling eyelet

#### Additional information

- Further detailed information can be found in the application table on page i-12

| Length | Part No.        | Diameter mm |
|--------|-----------------|-------------|
| 5 m    | <b>52055276</b> | 4           |
| 10 m   | <b>52055277</b> | 4           |
| 15 m   | <b>52055278</b> | 4           |
| 20 m   | <b>52055279</b> | 4           |
| 25 m   | <b>52055280</b> | 4           |
| 30 m   | <b>52055281</b> | 4           |

| Accessory   | Part No. |
|---|----------|
| Replacement parts for Perlon fish tapes, comprising pulling eyes WW 1/2" (1) and spring guide head M4 (1) | 52055288 |

### Nylon fish tape 4 mm dia.



#### Characteristics

- With pressed spring guide head and eyelet

#### Additional information

- Further detailed information can be found in the application table on page i-12

| Length                                    | Part No.        | Diameter mm |
|---|-----------------|-------------|
| 5 m                                       | <b>52055270</b> | 4           |
| 10 m                                      | <b>52055271</b> | 4           |
| 15 m                                      | <b>52055272</b> | 4           |
| 20 m                                      | <b>52055273</b> | 4           |
| 25 m                                      | <b>52055274</b> | 4           |
| 30 m                                      | <b>52055275</b> | 4           |
| 10 m including rotating spring guide head | <b>52055260</b> | 4           |
| 20 m including rotating spring guide head | <b>52055261</b> | 4           |
| 30 m including rotating spring guide head | <b>52055262</b> | 4           |

| Accessory   | Part No. |
|---|----------|
| Rotating spring guide head with eyelet, M4, 6 mm dia. | 52055263 |

## Steel fish tape 4 mm dia.



### Characteristics

- With pressed spring guide head and eyelet

### Additional information

- Further detailed information can be found in the application table on page i-12

| Length | Part No.        | Diameter mm |
|--------|-----------------|-------------|
| 10 m   | <b>52055283</b> | 4           |
| 20 m   | <b>52055285</b> | 4           |

## Flex-O-Twist™ speed flex leader

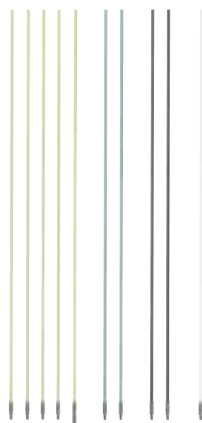


### Characteristics

- Especially suitable for sharp bends
- Flexible fish tape leader

| Length | Part No.        |
|--------|-----------------|
| 300 mm | <b>50308599</b> |

## Fibreglass cable pulling rods



### Characteristics

- Almost unbreakable due to special outer jacket
- Time-saving cable laying
- Laying also under the most difficult conditions

### Suitable for

- Cable installation and laying
- Pulling or pushing

| Length                                       | Part No.        | Version  |
|--|-----------------|--|
| 10 m   | <b>52055385</b> | Comprising of: 4 pce. light green fibreglass rods 5.6 mm dia. with WW connecting sleeve, 1 pce. light green fibreglass rod 5.6 mm dia. with WW connecting sleeve and universal joint, 2 pce. black fibreglass rods 6 mm dia. with WW connecting sleeve, 1 pce. white nylon rod 4 mm dia. with WW connecting sleeve, 2 pce. green fibreglass rods 4.6 mm dia. with WW connecting sleeve |
| 5 m  | <b>52055386</b> | Consists of: 3 pce. light green fibreglass sticks 5.6 mm dia. with WW connecting bushing, 1 pce. black fibreglass stick 6 mm dia. with WW connecting bushing, 1 pce. white nylon stick 4 mm dia. with WW connecting bushing  |
| Accessories                                  | Part No.        |  |
| Accessory set for cable pulling rods, 8-pcs. | 52055387        |  |
| Accessory set for cable pulling rods, 4-pcs. | 52055388        |  |

## Dura Spinner polyester fish tape system



- ▶ Cable pulling systems with innovative, extremely robust, twisted polyester fish tape
- ▶ Rotatable spring guide head

### Characteristics

- Extremely robust fish tape for very narrow bending radii
- This product's high thrust makes it the ideal solution for laying additional cables
- New rotatable spring guide head
- Suitable for rigid and flexible conduits
- Tape pulled in and out very simply
- Can also be uncoiled on the floor
- Including accessories and spare parts
- Robust ABS housing
- No more broken tapes

### Suitable for

- The laying of additional cables

| Item  | Part No.        |
|---|-----------------|
| Dura Spinner 3.0 mm dia., 20 m                        | <b>52074656</b> |
| Dura Spinner 3.0 mm dia., 30 m                        | <b>52074657</b> |
| Scope of supply                                       | Part No.        |
| Rotating spring guide head with eyelet, M4, 6 mm dia. | 52055263        |
| Pulling eye, M4                                       | 52055266        |
| Pulling aid for pulling system 3 - 6 mm dia.          | 52055311        |
| Accessories   | Part No.        |
| Dura Spinner spare fish tape 3.0 mm dia., 20 m        | 52074654        |
| Dura Spinner spare fish tape 3.0 mm dia., 30 m        | 52074655        |

## Flexi Spinner polyester cable pulling system



- ▶ Almost unbreakable
- ▶ Approx. 50 % less frictional resistance compared with nylon and perlon
- ▶ High thrust for long distances with narrow bending radius

### Characteristics

- Highly-flexible polyester tape
- Modern design
- Robust housing

### Additional information

- Further detailed information can be found in the application table on page i-12

| Item   | Length   | Part No.        | Diameter mm |
|--|----------|-----------------|-------------|
| Flexi Spinner polyester cable pulling system   | 20 m     | <b>52055389</b> | 4.5         |
| Flexi Spinner polyester cable pulling system   | 25 m     | <b>52055390</b> | 4.5         |
| Flexi Spinner polyester cable pulling system   | 30 m     | <b>52055391</b> | 4.5         |
| Flexi Spinner, winder case empty               |          | <b>52055392</b> |             |
| Scope of supply                                | Part No. | Quantity        |             |
| 5-piece accessory set for polyester fish tapes | 52055396 | 1               |             |
| Accessories                                    | Part No. | Page            |             |
| Polyester fish tape green 4.5 mm dia., 20 m    | 52055294 | 536             |             |
| Polyester fish tape green 4.5 mm dia., 25 m    | 52055295 | 536             |             |
| Polyester fish tape green 4.5 mm dia., 30 m    | 52055296 | 536             |             |
| Rotatable head with eye M5, dia. 7 mm          | 52055264 |                 |             |

## Speedy Spinner fibreglass cable pull-in system



- ▶ Unique, user-friendly design
- ▶ Very simple and quick pulling in and out of fibreglass tapes

### Characteristics

- One-handed operation
- Uncoiling also possible on the floor
- Flexible fibreglass spring for quick pulling in and out
- High thrust
- Accessory set supplied as standard

### Suitable for

- Tube diameter: 16 - 32 mm

### Additional information

- Further detailed information can be found in the application table on page i-12
- Always order repair adhesive separately!

| Item   | Diameter mm | Length | Part No.               |
|--|-------------|--------|------------------------|
| Speedy Spinner fibreglass cable pull-in system                       | 3           | 20 m   | <b>52055298</b>        |
| Speedy Spinner fibreglass cable pull-in system                       | 3           | 30 m   | <b>52055299</b>        |
| Speedy Spinner fibreglass cable pull-in system                       | 3           | 40 m   | <b>52055300</b>        |
| Scope of supply  |             |        | Part No.      Quantity |
| Head with eye M5   |             |        | 52055304      3        |
| Spring guide head with eye M5  |             |        | 52055305      1        |
| Spring guide head with eye M5 - 10 mm                                |             |        | 52055306      1        |
| Start/bushing sleeves M5   |             |        | 52055308      3        |
| Connecting sleeves   |             |        | 52055309      3        |
| Cable grip M5, 4-15 mm dia.  |             |        | 52055310      1        |
| Pulling aid for pulling system 3 - 6 mm dia.                         |             |        | 52055311               |
| Accessories  |             |        | Part No.               |
| Speedy Spinner accessory, repair patch for fibreglass tape 3 mm dia. |             |        | 52055312               |
| Fibreglass replacement tape 3 mm dia., 20 m                          |             |        | 52055289               |
| Fibreglass replacement tape 3 mm dia., 30 m                          |             |        | 52055290               |
| Fibreglass replacement tape 3 mm dia., 40 m                          |             |        | 52055291               |
| Speedy Spinner repair set, 10-piece                                  |             |        | 52055303               |
| Rotatable head with eye M5, dia. 7 mm                                |             |        | 52055264               |
| Item repair set  |             |        | Part No.               |
| Speedy Spinner repair set, 10-piece                                  |             |        | 52055303               |
| Scope of supply repair set   |             |        | Part No.      Quantity |
| Head with eye M5   |             |        | 52055304      3        |
| Start/bushing sleeves M5   |             |        | 52055308      3        |
| Connecting sleeves   |             |        | 52055309      3        |
| Pulling aid for pulling system 3 - 6 mm dia.                         |             |        | 52055311      1        |

## EASILY FORGOTTEN:

Be aware of the laying temperatures of cables and conductors! These can be obtained from manufacturer's data sheets. For a NYM conductor, for example, this temperature is +5° C.





## MagnumPRO™ oil-hardened steel fish tape



### Characteristics

- Winder case eases cable pulling
- Dirt-free tape finish
- High impact nylon winder case with large handle grip

| Item   | Tape dimensions mm | Length | Part No.        |
|--|--------------------|--------|-----------------|
| MagnumPRO™ oil-hardened steel fish tape      | 3.2 x 1.5          | 19.8 m | <b>52041709</b> |
| MagnumPRO™ oil-hardened steel fish tape      | 6.4 x 1.5          | 30.5 m | <b>52041745</b> |
| MagnumPRO™ oil-hardened steel fish tape      | 3.2 x 1.5          | 38.1 m | <b>52041741</b> |
| MagnumPRO™ oil-hardened steel fish tape      | 3.2 x 1.5          | 73.2 m | <b>52041743</b> |
| Accessories                                  |                    |        | Part No.        |
| MagnumPRO™ oil-hardened steel fish tape 60 m |                    |        | 52044594        |

## MagnumPRO™ stainless steel fish tape



- ▶ Stainless, speed flex leader
- ▶ Slim pulling eyelet permits trouble-free pulling in long and winding conduits

### Characteristics

- Can be used in conjunction with every steel fish tape with a tape dimension of 3.0 x 1.5 mm
- High impact nylon winder case with large handle grip

| Item  | Tape dimensions mm | Length | Part No.        |
|---|--------------------|--------|-----------------|
| MagnumPRO™ stainless steel fish tape                              | 3.2 x 1.5          | 30.5 m | <b>52041746</b> |
| MagnumPRO™ stainless steel fish tape                              | 3.2 x 1.5          | 61 m   | <b>52041747</b> |
| Accessory   |                    |        | Part No.        |
| Speed Flex leader for fish tapes with tape dimension 3.0 x 1.5 mm |                    |        | 50143921        |

## MagnumPRO™ nylon fish tape



- ▶ Non-conductive, non-coiling nylon tape

### Characteristics

- Diameter 4.8 mm
- High impact nylon winder case with large handle grip

| Item                       | Diameter mm | Length | Part No.        |
|----------------------------|-------------|--------|-----------------|
| MagnumPRO™ nylon fish tape | 4.8         | 15.2 m | <b>52041750</b> |
| MagnumPRO™ nylon fish tape | 4.8         | 30.5 m | <b>52041751</b> |
| Accessory                  |             |        | Part No.        |
| Replacement tip            |             |        | 50016644        |

## MagnumPRO™ fish tape



### Characteristics

- Fish tape from multi-strand steel tape
- Flexible type
- High impact nylon winder case with large handle grip

### Suitable for

- For quick and simple application

| Item                 | Diameter mm | Length | Part No.        |
|----------------------|-------------|--------|-----------------|
| MagnumPRO™ fish tape | 4.8         | 15.2 m | <b>52041748</b> |
| MagnumPRO™ fish tape | 4.8         | 30.5 m | <b>52041749</b> |

## MagnumPRO™ fibreglass fish tape



### Characteristics

- Non-conductive fibreglass tape with low friction coating
- To fish in small and large conduits even with wire or cable in place
- High impact nylon winder case with large handle grip

### Suitable for

- Data and telecommunication industry

| Item                               | Diameter mm | Length | Part No.        |
|------------------------------------|-------------|--------|-----------------|
| MagnumPRO™ fibreglass fish tape    | 4.3         | 15.2 m | <b>52041752</b> |
| MagnumPRO™ fibreglass fish tape    | 4.3         | 30.5 m | <b>52041753</b> |
| MagnumPRO™ fibreglass fish tape    | 4.8         | 61 m   | <b>50357468</b> |
| Accessory                          |             |        | Part No.        |
| Fibreglass fish tape accessory set |             |        | 50357506        |
| Pulling eyelet 4.8 mm              |             |        | 50359304        |

## Steel fish tape EZ Reach



### Characteristics

- With hand crank
- Flat steel tape for working above suspended ceilings, under carpets and through walls

| Item                     | Tape dimensions mm | Length | Part No.        |
|--------------------------|--------------------|--------|-----------------|
| Steel fish tape EZ Reach | 6.4 x 0.8          | 7.6 m  | <b>50016962</b> |

## Smart Butler fibreglass cable pulling-in system with steel reel basket



- ▶ Unique, user-friendly design, galvanised and sprayed
- ▶ Teflon-coated adapter for low resistance when winding and unwinding

### Characteristics

- High thrust
- Low-friction unwinding and rewinding
- Secure working thanks to operative holding brake
- Effective working with accessories mounted directly on frame
- From size 790 mm dia. steel reel basket, incl. rollers

### Additional information

- 4.5 / 6 mm dia.: Tension head with eyelet, fish tape with pressed start/end sleeves, connecting sleeve WW 1/4" - M6, starting spinner with shackle
- 7.5 / 9 / 11 mm dia.: Tension head with eyelet, fish tape with pressed start/end sleeves, connecting sleeve WW 1/2" - M12, starting spinner with shackle

| Item  | Diameter mm | steel reel basket mm | Version       | Length | Weight kg | Part No.        |
|---|-------------|----------------------|---------------|--------|-----------|-----------------|
| Smart Butler fibreglass cable pulling-in system 4.5 mm dia. with steel reel basket 330 mm dia. 40 m | 4.5         | 330 dia.             |               | 40 m   | 4         | <b>52055313</b> |
| Smart Butler fibreglass cable pulling-in system 330 mm dia. steel reel basket, 60 m                 | 4.5         | 330 dia.             |               | 60 m   | 5         | <b>52055315</b> |
| Smart Butler fibreglass cable pulling-in system 330 mm dia. steel reel basket, 80 m                 | 4.5         | 330 dia.             |               | 80 m   | 6         | <b>52055316</b> |
| Smart Butler fibreglass cable pulling-in system 550 mm dia. steel reel basket, 40 m                 | 6.0         | 550 dia.             |               | 40 m   | 10        | <b>52055325</b> |
| Smart Butler fibreglass cable pulling-in system 550 mm dia. steel reel basket, 60 m                 | 6.0         | 550 dia.             |               | 60 m   | 11        | <b>52055326</b> |
| Smart Butler fibreglass cable pulling-in system 550 mm dia. steel reel basket, 80 m                 | 6.0         | 550 dia.             |               | 80 m   | 12        | <b>52055327</b> |
| Smart Butler fibreglass cable pulling-in system 550 mm dia. steel reel basket, 100 m                | 6.0         | 550 dia.             |               | 100 m  | 12        | <b>52055328</b> |
| Smart Butler fibreglass cable pulling-in system 660 mm dia. steel reel basket, 40 m                 | 7.5         | 660 dia.             |               | 40 m   | 13        | <b>52055337</b> |
| Smart Butler fibreglass cable pulling-in system 660 mm dia. steel reel basket, 60 m                 | 7.5         | 660 dia.             |               | 60 m   | 14        | <b>52055338</b> |
| Smart Butler fibreglass cable pulling-in system 660 mm dia. steel reel basket, 80 m                 | 7.5         | 660 dia.             |               | 80 m   | 15        | <b>52055339</b> |
| Smart Butler fibreglass cable pulling-in system 660 mm dia. steel reel basket, 100 m                | 7.5         | 660 dia.             |               | 100 m  | 17        | <b>52055340</b> |
| Smart Butler fibreglass cable pulling-in system 660 mm dia. steel reel basket, 120 m                | 7.5         | 660 dia.             |               | 120 m  | 18        | <b>52055341</b> |
| Smart Butler fibreglass cable pulling-in system 660 mm dia. steel reel basket, 40 m                 | 9.0         | 660 dia.             |               | 40 m   | 14        | <b>52055347</b> |
| Smart Butler fibreglass cable pulling-in system 660 mm dia. steel reel basket, 60 m                 | 9.0         | 660 dia.             |               | 60 m   | 16        | <b>52055348</b> |
| Smart Butler fibreglass cable pulling-in system 790 mm dia. steel reel basket, 80 m                 | 9.0         | 790 dia.             | incl. rollers | 80 m   | 31        | <b>52055349</b> |
| Smart Butler fibreglass cable pulling-in system 790 mm dia. steel reel basket, 100 m                | 9.0         | 790 dia.             | incl. rollers | 100 m  | 33        | <b>52055350</b> |
| Smart Butler fibreglass cable pulling-in system 1000 mm dia. steel reel basket, 120 m               | 9.0         | 1000 dia.            | incl. rollers | 120 m  | 35        | <b>52055351</b> |
| Smart Butler fibreglass cable pulling-in system 1000 mm dia. steel reel basket, 150 m               | 9.0         | 1000 dia.            | incl. rollers | 150 m  | 37        | <b>52055352</b> |
| Smart Butler fibreglass cable pulling-in system 1000 mm dia. steel reel basket, 150 m               | 11.0        | 1000 dia.            | incl. rollers | 150 m  | 53        | <b>52055359</b> |
| Smart Butler fibreglass cable pulling-in system 1000 mm dia. steel reel basket, 200 m               | 11.0        | 1000 dia.            | incl. rollers | 200 m  | 60        | <b>52055360</b> |
| Smart Butler fibreglass cable pulling-in system 1000 mm dia. steel reel basket, 250 m               | 11.0        | 1000 dia.            | incl. rollers | 250 m  | 67        | <b>52055361</b> |
| Smart Butler fibreglass cable pulling-in system 1000 mm dia. steel reel basket, 300 m               | 11.0        | 1000 dia.            | incl. rollers | 300 m  | 75        | <b>52055362</b> |

| Accessories   | Part No. |
|---|----------|
| Smart Butler fibreglass replacement tape 4.5 mm dia., 40 m  | 52055317 |
| Smart Butler fibreglass replacement tape 4.5 mm dia., 60 m  | 52055318 |
| Smart Butler fibreglass replacement tape 4.5 mm dia., 80 m  | 52055319 |
| Smart Butler fibreglass replacement tape 6 mm dia., 40 m    | 52055329 |
| Smart Butler fibreglass replacement tape 6 mm dia., 60 m    | 52055330 |
| Smart Butler fibreglass replacement tape 6 mm dia., 80 m    | 52055331 |
| Smart Butler fibreglass replacement tape 6 mm dia., 100 m   | 52055332 |
| Smart Butler fibreglass replacement tape 7.5 mm dia., 40 m  | 52055342 |
| Smart Butler fibreglass replacement tape 7.5 mm dia., 60 m  | 52055343 |
| Smart Butler fibreglass replacement tape 7.5 mm dia., 80 m  | 52055344 |
| Smart Butler fibreglass replacement tape 7.5 mm dia., 100 m | 52055345 |
| Smart Butler fibreglass replacement tape 7.5 mm dia., 120 m | 52055346 |
| Smart Butler fibreglass replacement tape 9 mm dia., 40 m    | 52055353 |
| Smart Butler fibreglass replacement tape 9 mm dia., 80 m    | 52055355 |
| Smart Butler fibreglass replacement tape 9 mm dia., 100 m   | 52055356 |
| Smart Butler fibreglass replacement tape 9 mm dia., 120 m   | 52055357 |
| Smart Butler fibreglass replacement tape 9 mm dia., 150 m   | 52055358 |
| Smart Butler fibreglass replacement tape 11 mm dia., 150 m  | 52055363 |
| Smart Butler fibreglass replacement tape 11 mm dia., 200 m  | 52055364 |
| Smart Butler fibreglass replacement tape 11 mm dia., 250 m  | 52055365 |
| Smart Butler fibreglass replacement tape 11 mm dia., 300 m  | 52055366 |
| Starter and end bushing WW ¼" for fish tape 4.5 mm dia.     | 52055321 |
| Starter and end bushing WW ¼" for fish tape 6.0 mm dia.     | 52055333 |
| Starter and end bushing WW ½" for fish tape 7.5 mm dia.     | 52055369 |

| Accessory  | Part No. |
|--|----------|
| Starter and end bushing WW ½" for fish tape 9 mm dia.  | 52055370 |
| Starter and end bushing WW ½" for fish tape 11 mm dia. | 52055371 |
| Connecting sleeve for fibreglass 4.5 mm dia.           | 52055322 |
| Connecting sleeve for fibreglass 6 mm dia.             | 52055334 |
| Connecting sleeves for fibreglass tape 9 mm dia.       | 52055372 |
| Connecting sleeves for fibreglass tape 11 mm dia.      | 52055373 |
| Connecting sleeve WW 1/2" with rotary swivel           | 52055374 |
| Bulb with shackle WW ¼" for 4.5 mm dia.                | 52055323 |
| Bulb with shackle WW ¼" for 6.0 mm dia.                | 52055335 |
| Bulb with shackle WW ½" for 7.5 mm dia.                | 52055367 |
| Bulb with castor WW ½"                                 | 52055368 |
| Tension head with eyelet WW 1/4" for 4.5 - 6 mm dia.   | 52055320 |
| Emergency repair set for fibreglass tape 4.5 mm dia.   | 52055324 |
| Emergency repair set for fibreglass tape 6 mm dia.     | 52055336 |
| Emergency repair set for fibreglass tape 7.5 mm dia.   | 52055375 |
| Emergency repair set for fibreglass tape 9 mm dia.     | 52055376 |
| Emergency repair set for fibreglass tape 11 mm dia.    | 52055377 |

## Mechanical counter for Smart Butler



### Characteristics

- Mechanical counter
- Can be retrofitted for smart butlers from 6 mm and production date from May 2019

| Item  | Part No.        |
|---|-----------------|
| Mechanical counter for 6 mm dia.              | <b>52055267</b> |
| Mechanical counter for 7.5 / 9 and 11 mm dia. | <b>52055268</b> |





### Polyester Butler cable pulling system with steel reel basket



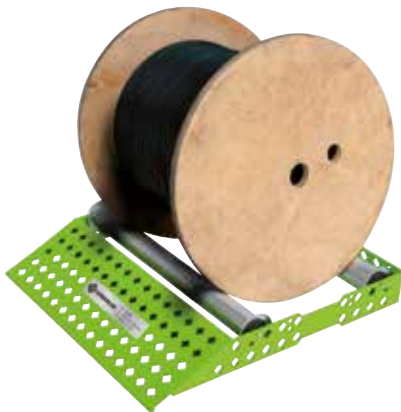
- ▶ Unique, user-friendly design, galvanised and sprayed
- ▶ Teflon-coated adapter for low resistance when winding and unwinding

#### Characteristics

- High thrust
- Low-friction unwinding and rewinding
- Secure working thanks to operative holding brake
- Effective working with accessories mounted directly on frame

| Item   | Diameter mm | steel reel basket mm | Length m | Weight kg | Part No.        |
|--|-------------|----------------------|----------|-----------|-----------------|
| Polyester Butler cable pulling system 350 mm dia. steel reel basket, 50 m      | 6           | Ø 350                | 50       | 10        | <b>52074658</b> |
| Scope of supply  |             |                      |          |           | Part No.        |
| Smart Butler accessory - start/end sleeves WW 1/4" for rod 4.5 mm dia.         |             |                      |          |           | <b>52055321</b> |
| Smart Butler accessory - starting spinner with shackle WW 1/4" for 4.5 mm dia. |             |                      |          |           | <b>52055323</b> |
| Spring guide head with eye M5  |             |                      |          |           | <b>52055265</b> |
| Head with eye M5 WW 1/4" for dia. 4.5 - 6 mm                                   |             |                      |          |           | <b>52055320</b> |

### Easy Roller cable drum unwinder



- ▶ Unique, user-friendly design
- ▶ 30 % less weight
- ▶ Ramp with shallow incline

#### Characteristics

- Light - 30% less weight
- Easy loading and unloading of heavy cable drums thanks to the shallow inclined ramp
- Rollers with integrated side guides
- Possible to fit to the cable drum diameter

#### Suitable for

- Large and small cable drums
- Width 530 mm, 200 kg carrying capacity
- Width 670 mm, 250 kg carrying capacity

| Item                                     | Dimension mm   | Width mm | Part No.        |
|--|----------------|----------|-----------------|
| Standard                                 | 530 x 570 x 90 | 530      | <b>52055383</b> |
| Wide                                     | 670 x 605 x 95 | 670      | <b>52055384</b> |
| Accessory                                |                |          | Part No.        |
| Easy Roller replacement roller, standard |                |          | 52055383ER      |
| Easy Roller replacement roller, wide     |                |          | 52055384ER      |

## Cable drum uncoilers Easy Roller Plus



- ▶ Reduced incline on the loading ramp allows simple rewinding of the cable drum
- ▶ Handles for easy positioning and carrying
- ▶ Ball-bearing mounted rollers
- ▶ U-sections for fixing the unwinding rails

### Additional information

- Cable drum unwinders consisting of 2 cable drum unwinding rails and one spacer rail

| Item                                     | Dimensions mm    | Weight kg | Part No.        |
|--|------------------|-----------|-----------------|
| Cable drum uncoiler Easy Roller Plus S   | 950 x 145 x 110  | 33.5      | <b>52055401</b> |
| Cable drum uncoiler Easy Roller Plus L   | 1050 x 145 x 110 | 35.5      | <b>52055402</b> |
| Cable drum uncoiler Easy Roller Plus ALS | 950 x 145 x 110  | 19.5      | <b>52055403</b> |

## Rope for cable puller 6800-22 CE



### Characteristics

- Breaking strength approx. 14.2 t
- Rope diameter 22 mm
- Rope on rope stand

| Item                                    | Part No.        |
|---|-----------------|
| Rope for cable puller 6800-22 CE, 91 m  | <b>50341367</b> |
| Rope for cable puller 6800-22 CE, 182 m | <b>50341375</b> |
| Rope for cable puller 6800-22 CE, 365 m | <b>50341383</b> |
| Rope stand for ropes 91 m and 182 m     | <b>50343629</b> |

## Tray type sheaves for cable puller 6800-22 CE



### Characteristics

- Steel frames with forged eyelet 25 mm
- Sheaves from aluminium alloy with self-lubricating bearings
- Max. rated capacity 3.6 t
- Tool support/hanging ring (Carabiner)

| External diameter mm | Internal radius mm | Width mm | Weight kg | Part No.        |
|----------------------|--------------------|----------|-----------|-----------------|
| 300                  | 100                | 125      | 12        | <b>50008722</b> |
| 460                  | 180                | 150      | 20        | <b>50008730</b> |
| 600                  | 250                | 165      | 30        | <b>50008749</b> |

## Platform-type sheave 125 mm

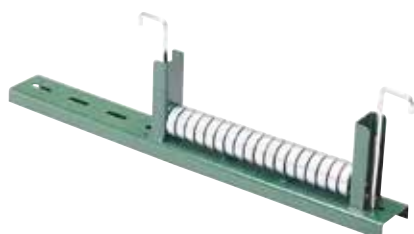


### Characteristics

- Sheaves from aluminium alloy
- Self-lubricating bearings
- Steel frames for mounting to cable ducts up to 50 mm thickness
- Extremely robust

| Length mm | Width mm | Weight kg | Part No.        |
|-----------|----------|-----------|-----------------|
| 300       | 125      | 5         | <b>50153323</b> |
| 560       | 125      | 8         | <b>50190946</b> |

## Platform-type sheave



### Characteristics

- Steel ball-bearings
- Steel frames
- Mounting slots
- Universal mounting brackets

| Part No.        | Version  | Width of cable conduit mm | Weight kg |
|-----------------|----------|---------------------------|-----------|
| <b>50273868</b> | Straight | 600 - 760                 | 5.9       |
| <b>50273884</b> | Radius   | 300 - 450                 | 5         |

## Pulling grips Junior, closed

### Characteristics

- Single weave, galvanized steel mesh with flexible pulling eyelet

### Suitable for

- The pulling-in of small diameter cables
- For manual pulling of feed lines in pipes and cable ducts



| Part No.        | Length of mesh mm | Eye length mm | For cable diameter mm | Max. pulling force kN |
|-----------------|-------------------|---------------|-----------------------|-----------------------|
| <b>50305964</b> | 110               | 83            | 5 - 6                 | 0.3                   |
| <b>50305840</b> | 110               | 83            | 7 - 9                 | 0.4                   |
| <b>50305867</b> | 180               | 96            | 10 - 12               | 0.8                   |
| <b>50305883</b> | 220               | 110           | 13 - 15               | 1.1                   |
| <b>50305905</b> | 255               | 130           | 16 - 18               | 1.7                   |
| <b>50305921</b> | 255               | 146           | 19 - 25               | 2.4                   |
| <b>50305948</b> | 300               | 165           | 26 - 31               | 3.4                   |

## T-Basket type pulling grips, closed

### Characteristics

- Double weave galvanized steel mesh with flexible pulling eyelet

### Suitable for

- Medium-weight pulls in pipes and cable ducts



| Part No.        | Length of mesh mm | Eye length mm | For cable diameter mm | Max. pulling force kN |
|-----------------|-------------------|---------------|-----------------------|-----------------------|
| <b>50305581</b> | 535               | 200           | 13 - 15               | 4.0                   |
| <b>50305603</b> | 610               | 200           | 16 - 18               | 4.9                   |
| <b>50305620</b> | 610               | 230           | 19 - 25               | 6.0                   |
| <b>50305646</b> | 610               | 230           | 26 - 38               | 8.7                   |
| <b>50305662</b> | 610               | 280           | 39 - 50               | 14.5                  |
| <b>50305689</b> | 610               | 300           | 51 - 63               | 16.4                  |
| <b>50305700</b> | 610               | 300           | 64 - 76               | 21.7                  |
| <b>50305727</b> | 610               | 360           | 77 - 88               | 21.7                  |
| <b>50305743</b> | 660               | 360           | 89 - 100              | 27.5                  |
| <b>50305760</b> | 915               | 230           | 19 - 25               | 6.0                   |
| <b>50305786</b> | 915               | 230           | 26 - 38               | 8.7                   |
| <b>50310100</b> | 915               | 280           | 39 - 50               | 14.5                  |
| <b>50305808</b> | 915               | 300           | 51 - 63               | 16.4                  |
| <b>50310127</b> | 915               | 300           | 64 - 76               | 21.7                  |
| <b>50305824</b> | 915               | 360           | 77 - 88               | 21.7                  |
| <b>50310143</b> | 1020              | 360           | 89 - 100              | 27.5                  |

Use a pulling grip so you don't have to strip the cable before it is pulled in! A cable grip allows you to pull with greater force. This prevents tapering of the cross-section.



## Pulling grip set, closed



### Characteristics

- Set of the most important pulling grips for the most frequently required pulling operations

| Part No.        | Diameter mm |
|-----------------|-------------|
| <b>50307584</b> | 7 - 31      |
| <b>50314823</b> | 19 - 50     |
| <b>50314831</b> | 51 - 76     |
| <b>50314840</b> | 19 - 76     |

## Pulling grip, open



### Characteristics

- Single weave, galvanised steel netting mesh with bar closure
- Offset flexible eyelet

### Suitable for

- Easy and straight pulls when the cable end is not available

| Part No.        | Length of mesh mm | Eye length mm | For cable diameter mm | Max. pulling force kN |
|-----------------|-------------------|---------------|-----------------------|-----------------------|
| <b>50306588</b> | 150               | 175           | 13 - 15               | 1.3                   |
| <b>50310240</b> | 200               | 175           | 16 - 18               | 1.6                   |
| <b>50306600</b> | 250               | 175           | 19 - 25               | 1.9                   |
| <b>50310267</b> | 300               | 200           | 26 - 31               | 3.0                   |
| <b>50306626</b> | 350               | 200           | 32 - 38               | 4.0                   |
| <b>50310283</b> | 380               | 230           | 39 - 44               | 5.1                   |
| <b>50306642</b> | 400               | 250           | 45 - 50               | 6.7                   |
| <b>50310305</b> | 480               | 250           | 51 - 63               | 8.0                   |
| <b>50306669</b> | 500               | 250           | 64 - 76               | 9.7                   |
| <b>50310321</b> | 530               | 300           | 77 - 88               | 10.6                  |
| <b>50306685</b> | 600               | 300           | 89 - 100              | 10.6                  |

## Cable installation lubricant



### Characteristics

- Reduces friction by up to 80 %
- Biodegradable
- Harmless to the user

### Suitable for

- Electric/telephone cables in pipes 16 - 25 mm dia.
- Large cable diameters

| Item   | Part No.        |
|--|-----------------|
| Cable lubricant gel in tube 0.25 kg  | <b>52055379</b> |
| Lubricant foam bottle 1.00 kg  | <b>52055380</b> |
| Cable lubricant liquid for optical fibres and power cables, canister 5 kg  | <b>52055381</b> |
| Cable lubricant liquid for optical fibres and power cables, canister 10 kg | <b>52055382</b> |

## Lubricant spray



### Characteristics

- Reduces friction by up to 80 %
- Biodegradable
- Silicon-free
- Not flammable

### Suitable for

- Electric/telephone cables in pipes 16 - 25 mm dia.

| Item                         | Part No.        |
|------------------------------|-----------------|
| Lubricant foam bottle 400 ml | <b>52055378</b> |