

Cable Guiding Equipment



Cable Guide Systems

In trenches

In manholes

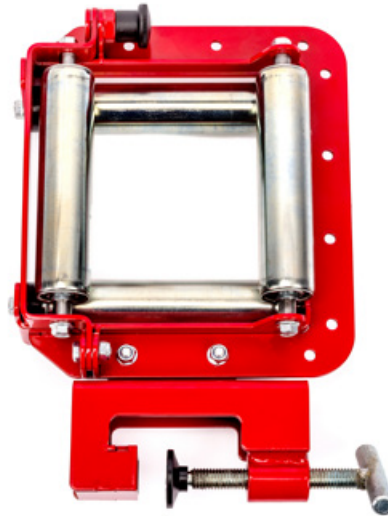
Manhole cable guide bow
and accessories

Manhole Cover Lifters

Cable management systems

Cable tray rollers

*Fast & Safe solution
for cable trays*



Cable laying in commercial and industrial facilities, refineries, sewer system or tunnels often places high demands on workers and equipment. For this kind of cable laying technique, KATIMEX® offers a robust and effective solution to guide cables through cable ducts from different manufacturers.

The cable tray rollers from Katimex are specifically designed for this purpose and guarantee fast and smooth cable laying. Thanks to the comprehensive range of accessories the mounting in and around cable trays is made easy. The ball bearing cable tray rollers are made of galvanized steel and are therefore very robust.

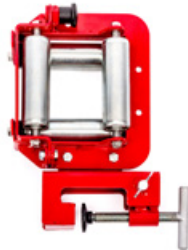
Different sizes of the rollers also enable even extremely heavy and thick cables to be pulled with ease. Even small bending radius are possible by using the 5th roller. Clamp and wall brackets as well as horizontal and vertical traverse tubes complete the whole range of Katimex cable tray rollers, for the best possible flexibility.





Cable tray rollers

Cable tray roller RFK



4 highly robust, thick-walled steel tubes. With multi-functional bracket for mounting on cable ducts, T-beams or tubes. Rotatable 4th roller allows insertion of the cable via quick release feature. Prepared for a 5th roller. Powder-coated frame.

Designation	Load capacity	Cable ø max.	Weight	Art.No.
Cable tray roller RFK 55	60 kg	55 mm	2,5 kg	105110
Cable tray roller RFK 90	60 kg	90 mm	3,0 kg	105140
Cable tray roller RFK 140	60 kg	140 mm	3,5 kg	105160

Traverse with holder RFK

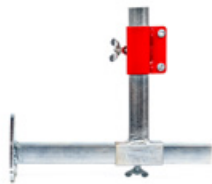


Multi-functional mounting on cable trays of 80-500 mm width. Standard fitting with traverse holder. For use with cable tray rollers type RFK 55, 90, 140. Fully adjustable positioning with clamp screw. Powder-coated frame.

Dimensions 500 x 300 x 100 mm

Designation	Load capacity	Weight	Art.No.
Traverse RFK	150 kg	2,5 kg	105158

Wall brackets RFK



Steel wall brackets for mounting all Katimex cable tray rollers on walls or any other kind of carrier. Robust clamp screw for exact placement of the cable tray roller. Galvanized surface.

Dimensions: 320 x 140 x 120 mm

Designation	Load capacity	Weight	Art.No.
Wall brackets RFK	150 kg	2,5 kg	105156

Traverse tube with holder RFK



For pulling cable on two level cable trays. The traverse tube connects both trays and thus enables a stable mounting of the cable tray rollers. Incl. traverse holder. Galvanized surface.

Dimensions: 500 x 80 x 80 mm

Designation	Load capacity	Weight	Art.No.
Traversenrohr mit Halter RFK	150 kg	2,0 kg	105159

5th roller for cable tray roller RFK



To expand the bending radius from 15 to 50mm. Fits all Katimex cable tray rollers of the RFK family. Powder-coated frame.

Designation	Load capacity	Weight	Art.No.
5th roller for cable tray roller RFK 55	60 kg	0,3 kg	105111
5th roller for cable tray roller RFK 90	60 kg	0,4 kg	105141
5th roller for cable tray roller RFK140	60 kg	0,5 kg	105161

Clamp bracket for RFK



For multi-functional mounting of cable trays. Incl. traverse holder. For cable tray roller RFK 55, 90, 140. Fully adjustable clamp screw. Powder-coated frame.

Dimensions: 160 x 120 x 70 mm

Designation	Load capacity	Weight	Art.No.
Clamp bracket universal RFK	150 kg	1,0 kg	105155



Cable Guide Systems

Rollers for cable trays

safe, easy & timesaving solutions

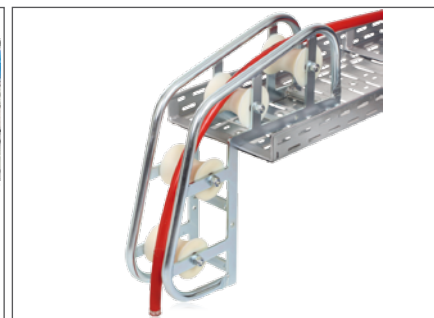


Cable placing in **residential**, commercial, and industrial facilities often place high demands on workers and equipment. KATIMEX® **rollers for cable trays** offer users the **best solution for installing cables quickly and safely**.

These rollers are designed to ensure cable installation in the **shortest time** and with minimum pulling loading. Possibility of accidents and physical damage is, therefore, reduced.

A full range of accessories is available to accommodate any needed mounting position or differences in height.

Rollers are available in **plastic with slide bearings** or **zinc coated steel with ball bearings**. Both types can be mounted with safety using the different fixing accessories, there is also a wall fixing available.



Cable Guide Systems

Traverses



The **traverse fitting** is available in two forms

- for the steel cable tray rollers
- for the plastic cable tray rollers

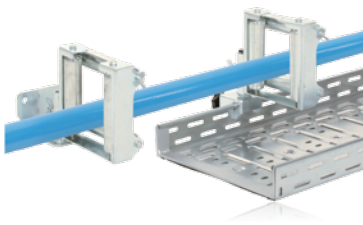
The fitting ensures the safe mounting of the cable tray roller onto two cable trays that are fixed on top of the other. Height differences of the existing cable trays can be accommodated easily and safely.

Fixing Advantages:

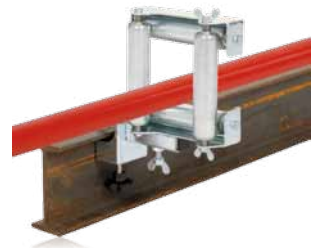
The KATIMEX® product range for cable guiding systems offers the user a number of advantages.

On cable trays, which are often difficult to reach, they ensure a time saving and safe placement.

Choosing the correct fixing from the full range of accessories, even the most difficult and complex cable laying situation can be effectively resolved.



Thanks to the well considered fixing possibilities KATIMEX® cable tray rollers can be fixed anywhere, also on T-carriers.



As to the rich accessories the use of cable tray rollers is possible also outside cable trays.

Multifunctional fixing

For the universal fixing of the cable roller "steel" to the mostly used cable trays, T-carrier etc.



Wall fixing

With the wall fixing the rollers can be fixed in cable ducts. The roller is quick and easily dismantled with butterfly screws.



"one hand" fixing system

For a quick, turnable and safe fixing above cable trays.

For cable tray height up from 40 mm to 80 mm. Max. length 130 mm (mounted)
Optional to cable tray roller "plastic"



Features

Roller, steel 80 mm

- zinc coated steel roll
- ball bearing mounted
- optional 4th roll
- optional different fixing possibilities

Roller, plastic 50 mm

- weather resistant plastic roll
- slide bearing
- optional 4th roll
- incl. fixing material

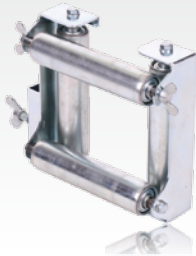
Roller, plastic 100 mm

- weather resistant plastic roll
- slide bearing
- optional 4th roll swiveling
- incl. fixing material



Cable Guide Systems

Cable tray roller



Cable tray roller steel, 75 mm

3 roller system, width of roll 130 mm, dia. 30 mm

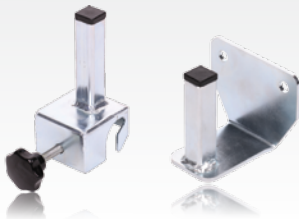
Fixing of the 4th roll by 2 butterfly screws

Without fixing material

dimensions 220 mm x 165 mm x 55 mm

	cable-Ø max.	weight	art.-no.
3 roller system	75 mm	1.30 kg	105240
4 th roll	75 mm	0.30 kg	105241
Traverse, 550 mm		1.15 kg	105247

Fixing Clamp



Fits to cable tray roller 75 mm, steel

For universal fixing to the most used cable tray,

T-profiles, etc. and for fixing outside of cable tray.

	weight	art.-no.
Universal fitting	0.35 kg	105245
Wall fitting	0.45 kg	105246

Cable tray roller



Cable tray roller 50 mm, plastic

3 roller system, width of roll 100 mm,

Fixing of the 4th roll by a star handle screw

Incl. fixing clamp

dimensions 210 mm x 140 mm x 80 mm

	cable-Ø max.	weight	art.-no.
3 roller system	50 mm	1.30 kg	105210
4 th roll	50 mm	0.40 kg	105211

Cable tray roller



Cable tray roller 100 mm, plastic

3 roller system, width of roll 140 mm

Fixing of the 4th roll by a star handle screw

Incl. fixing material

dimensions 290 mm x 200 mm x 90 mm

	cable-Ø max.	weight	art.-no.
3 roller system	100 mm	2.65 kg	105220
4 th roll	100 mm	0.55 kg	105221
Traverse, 550 mm		2.30 kg	105225

Quick connector



"one hand" fixing for quick, turnable and safe fixing of the cable tray roller, plastic,

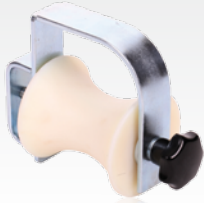
For cable trays from 40 mm up to 80 mm

Max. length 130 mm (mounted)

	weight	art.-no.
	0.25 kg	105215

Cable Guide Systems

Cable tray roller



50 mm, light duty
1 roll system, width of roll 100 mm
dimensions 200 mm x 140 mm x 85 mm

cable-Ø max.	weight	art.-no.
50 mm	1.30 kg	105200

Cable tray roller

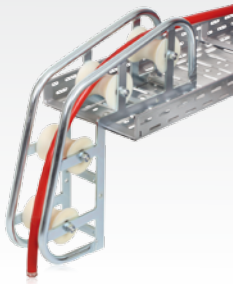


40 mm, aluminium
4 roller system, width of roll 70 mm (without fixing material)
dimensions 220 mm x 160 mm x 55 mm

cable-Ø max.	weight	art.-no.
40 mm	1.70 kg	105250

Mounting bracket for cable tray roller	0.40 kg	105251
----------------------------------------	---------	--------

Guiding bow



Guiding bow for cable trays.
Zinc coated steel frame with 4 ball bearing mounted plastic rolls.
90° bow with 400 mm radius and 320 mm floor space.

cable-Ø max.	weight	art.-no.
80 mm	8.00 kg	105230

KSW-E



KSW-E Electric capstan winches

KATIMEX® Electric Capstan Winches are specifically designed to be fixed and used in different working positions to give different pulling directions.

Usage is simple, safe and practical, even when used under limited working space such as an industrial plant. The extension side plates are removable.

Here also the multiple fixing possibilities increase the safety especially if the winch cannot be placed as requested.

dimensions 608 mm x 376 mm x 400 mm

type	engines	pulling force	weight	art.-no.
KSW-E 500	0.55 KW	2.5 / 5.0 kN	34 kg	105510
KSW-E 800	1.10 KW	4.0 / 8.0 kN	38 kg	105511

Polyester Ropes



Polyester Ropes

high load capacity, ductile polyester ropes, 16-times (8 and 12 mm) or 20-times (16 mm) woven. Eyelets on both sides.

Other lengths on request

type	length	rope-Ø	breaking load	weight	art.-no.
PFS 8-250	250 m	8 mm	15.5 kN	12.2 kg	105652
PFS 12-250	250 m	12 mm	24.0 kN	32.7 kg	105656

Cable Guiding Equipment

in trenches

efficient and safe
cable guiding in trenches



Power and communication cables are often laid in open trenches where the road and ground conditions result in **the cable route having a number of curves**. With the cable's **own weight** and the **high tensions** involved the cable cannot be fed cleanly. For this reason **suitable cable guiding devices are recommended**.

For this field of application **KATIMEX® offers a fully comprehensive range of ground cable rollers and protection systems**.

The **ground cable rollers** and **corner cable rollers** from KATIMEX® have abrasion resistant **aluminium alloy rollers** which run on **maintenance free** dirt and dust-proof bearings.

The sturdy and robust steel frames are completely galvanized and guarantee a **long working life** even under extreme conditions.

As a **cost efficient** option to the aluminium rollers KATIMEX® offers **rollers made of steel and synthetic**. These units are **light weight** and **easily and safely stacked** for transportation.



Cable Guiding Equipment

Ground Cable Roller



Ground Cable Roller, aluminium

abrasion resistant aluminium rollers, galvanized steel tube frame
dust- and soil proof ball bearings, large ground clearance

dimensions 300 mm x 210 mm x 260 mm

cable- \varnothing max.	weight	art.-no.
140 mm	4,1 kg	105060

Ground Cable Roller



Ground Cable Roller, steel

abrasion resistant steel rollers, galvanized steel tube frame
dust- and soil proof ball bearings, large ground clearance

dimensions 300 mm x 240 mm x 250 mm

cable- \varnothing max.	weight	art.-no.
160 mm	4,0 kg	105061

Ground Cable Roller



Ground Cable Roller, synthetic

non-aging and weatherproof, extreme light weight, highly shock-resistant
stackable, large ground clearance, for cables up to \varnothing 100 mm

dimensions 270 mm x 220 mm x 200 mm

cable- \varnothing max.	weight	art.-no.
100 mm	1,7 kg	105062

Ground Cable Roller



Ground Cable Roller, with base plate

stable Ground Cable Roller, galvanized steel tube frame,
ball beared synthetic roller, for cables up to \varnothing 200 mm

dimensions 300 mm x 270 mm x 260 mm

cable- \varnothing max.	weight	art.-no.
200 mm	4.4 kg	105064

Corner Cable Roller



Corner Cable Roller, aluminium

three abrasion resistant aluminium alloy rollers, dust- and soil proof ball bearings
quick clutch system (for fast connecting of two or more elements
no additional fixing needed)

dimensions 450 mm x 270 mm x 300 mm

cable- \varnothing max.	weight	art.-no.
110 mm	13.8 kg	105050



Cable Guiding Equipment

Corner Cable Roller



Corner Cable Roller, steel

three abrasion resistant steel alloy rollers, dust- and soil proof ball bearings
clutch system with fastening spikes (for connecting of two or more elements for ideal cable guiding)

dimensions 450 mm x 270 mm x 310 mm

cable- \varnothing max.	weight	art.-no.
140 mm	10,4 kg	105051

Cable Guiding Frame



Cable Guiding and Run-off Frame

provides the central feeding of the cable from the drum to the roller system
two steel rollers with ball bearings, robust steel construction, collapsible

dimensions 1200 mm x 400 mm x 400 mm / 680 mm x 460 mm x 400 mm

width running thread	weight	art.-no.
1000 mm	13,8 kg	107024

Cable Guiding Equipment

manhole cable guide bow & accessories

safe cable guiding over the edge
of the manhole into the conduit



When cables are being laid, particularly in built up urban areas, the cable is fed from the cable drum into the underground conduit system passing over edges. This would inevitably cause damage to the cable coating unless **appropriate auxiliary devices** are used.

KATIMEX® Manhole Cable Guide Bows and pulley sets have been **specifically designed** for this application and enable the cable to be fed from the drum into the conduit without friction and kinks. By using these items the cable coating and winching wire is preserved and the power required for winching is reduced.

The **Cable Guiding and Run-off Frame** is designed to provide central feeding of the cable from the drum. Positioned between the manhole and the cable drum the **cable runs** automatically to the centre over two angled steel rollers. The **robust steel construction** can be folded together to enable easy and safe transportation.

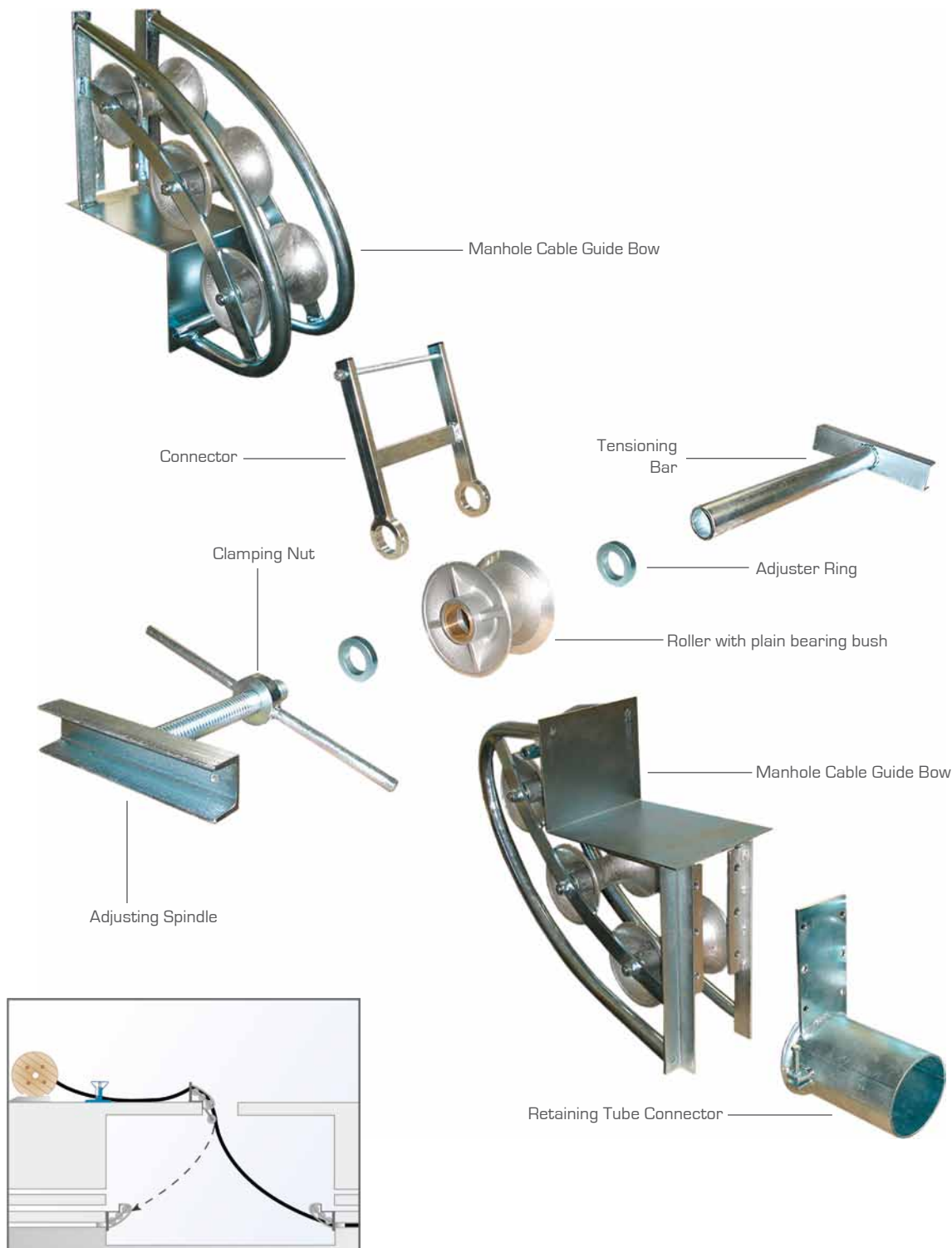


Cable Guiding Equipment

Technical Information:

Manhole cable guide bows, pulleys and tensioning bars are all constructed from robust steel. They are all completely galvanized and have **long working lives even under tough conditions**. The rollers are made of particularly abrasion-resistant aluminium alloy and run on maintenance free **dirt and soil proof ball bearings**.

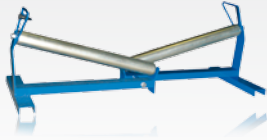
Tensioning bars are available in **various lengths** for the different manhole sizes. The guide bow can therefore be moved to various positions.





Cable Guiding Equipment

Cable Guiding Frame



Cable Guiding and Run-off Frame

provides the central feeding of the cable from the drum to the roller system
two steel rollers with ball bearings, robust steel construction, collapsible
dimensions 1200 mm x 400 mm x 400 mm / 680 mm x 460 mm x 400 mm

width running thread	weight	art.-no.
1000 mm	13.8 kg	107024

Manhole Cable Guide Bow



Manhole Cable Guide Bow

galvanized steel frame with abrasion-resistant aluminium alloy rollers
dust and soil proof bearings
bow radius 700 mm
dimensions 700 mm x 380 mm x 210 mm

cable-Ø max.	weight	art.-no.
120 mm	11.8 kg	105002

Pulley Set



Pulley Set

including adjusting spindle , clamping nut with two adjuster rings, roller with plain bearing bush, four tensioning bars 300, 520, 740, 960 mm,
aluminium alloy roller , other parts galvanized steel.

cable-Ø max.	weight	art.-no.
120 mm	34 kg	105003

Connector



Connector for Manhole Cable Guide Bow and Pulley Set

galvanized steel

weight	art.-no.
1.9 kg	105022

Manhole Cable Guide Bow



Manhole Cable Guide Bow and Pulley Set

complete unit comprising art.-no. 105002, 105003 and 105022

cable-Ø max.	weight	art.-no.
120 mm	59 kg	105001

Adjuster Ring



Adjuster Ring

galvanized steel
width 18 mm

internal-Ø	width	weight	art.-no.
52 mm	18 mm	0.5 kg	105009

Cable Guiding Equipment

Adjusting Spindle



Adjusting Spindle

galvanized steel, length 300 mm

	weight	art.-no.
adjusting spindle with clamping nut	5.2 kg	105010
adjusting spindle, single	4.1 kg	105011
clamping nut	0.9 kg	105012

Tensioning Bar



Tensioning Bar

for use with adjusting spindle and clamping nut, galvanized steel

Span	length	weight	art.-no.
420 - 640 mm	76 - 92 mm	4.0 kg	105004
640 - 860 mm	90 - 114 mm	5.0 kg	105005
860 - 1080 mm	115 - 132 mm	6.0 kg	105006
1080 - 1300 mm	140 - 165 mm	7.4 kg	105007
Extension			
galvanized steel	800 mm	5.0 kg	105013

Aluminium Pulley



Aluminium Pulley

abrasion resistant aluminium alloy with gunmetal bush

roller- \varnothing ext.	roller- \varnothing int.	width	weight	art.-no.
195 mm	51.4 mm	120 mm	3.0 kg	105008

Retaining Tube Connector



Retaining Tube Connector

for fixing of the manhole guide bow in the conduit, galvanized steel, complete with screw set for attaching to the manhole cable guide bow.

nominal width	weight	art.-no.
DN 100	3.5 kg	105014
DN 150	3.7 kg	105015

Cable Guiding Equipment

in manholes

*gentle and controlled
cable guiding in manholes*



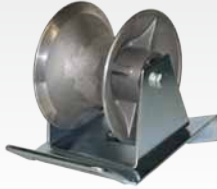
When feeding cable from a cable drum into an underground conduit system it would need to **pass over the edge** of the manhole into the conduit. This could cause considerable damage to the cable coating unless **suitable guiding equipment** is used. Also unless guiding equipment is used the **winching tensions are difficult to regulate** and there could be **possible safety risk for the installation contractors**.

KATIMEX® Manhole Cable guide bows and pulley sets are **specifically designed** for this application: they enable the cable to be fed from the drum into the conduit **without a minimum of friction** and **without kinks**. The cable coating and the winching rope are preserved and the **power required for winching is reduced**.



Cable Guiding Equipment

Manhole Border Roller



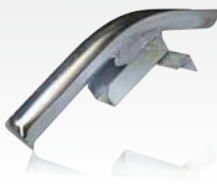
Manhole Border Cable Roller

can be set up at the edge of the manhole, robust, galvanized steel construction
abrasion resistant aluminium alloy roller, slewable in all directions

dimensions 300 mm x 200 mm x 230 mm

roller- \varnothing max.	roller- \varnothing ext.	roller- \varnothing int.	weight	art.-no.
120 mm	195 mm	105 mm	4.1 kg	105070

Cable Protection Bend



Tilting Cable Protection Bend

for fixing on the edge of the manhole, robust, galvanized steel construction

dimensions 540 mm x 200 mm x 275 mm

nominal width	weight	art.-no.
DN 100	4.7 kg	103225

Cable Protection Bend



Cable Protection Bend

robust, galvanized steel construction

dimensions 540 mm x 120 mm x 200 mm

nominal width	weight	art.-no.
DN 100	2.1 kg	103227

Cable Protection Bend



Cable Protection Bend with handle

robust, galvanized steel construction

dimensions 540 mm x 120 mm x 200 mm

nominal width	weight	art.-no.
DN 100	2.4 kg	103224

Cable Protection Bend



Cable Protection Bend with handle and stop

robust, galvanized steel construction

dimensions 540 mm x 120 mm x 200 mm

nominal width	weight	art.-no.
DN 100	2.4 kg	103222

Cable Protection Bend



Two-part Cable Protection Bend

with long socket, can be clamped in conduit, galvanized steel construction

nominal width	length	weight	art.-no.
DN 28	535 mm	0.6 kg	103245
DN 35	530 mm	0.8 kg	103246
DN 40	430 mm	0.7 kg	103247
DN 100	350 mm	3.3 kg	103238



Cable Guiding Equipment

Cable Socket



2-part Cable Socket

straight version, clampable, galvanized steel, length 230 mm

nominal width	duct-Ø	weight	art.-no.
DN 80	76 - 92 mm	1.5 kg	103232
DN 100	92 - 114 mm	1.8 kg	103233
DN 120	115 - 132 mm	2.7 kg	103234
DN 150	140 - 165 mm	3.4 kg	103235

Cable Socket



2-part Cable Socket with protection rollers

foldable, clampable, for guiding cables, galvanized steel, length 300 mm

nominal width	duct-Ø	weight	art.-no.
DN 80	76 - 92 mm	3.5 kg	103315
DN 100	90 - 114 mm	4.1 kg	103316
DN 120	115 - 132 mm	6.2 kg	103317
DN 150	140 - 165 mm	6.9 kg	103318

Cable Socket



Cable Socket with roller

foldable, for guiding cables and auxiliary and winching wires, galvanized steel

nominal width	duct-Ø	weight	art.-no.
DN 80	76 - 92 mm	3.2 kg	103319
DN 100	92 - 114 mm	3.8 kg	103320
DN 120	115 - 132 mm	4.6 kg	103321
DN 150	140 - 165 mm	5.2 kg	103322

Cable Socket



Cable Socket with roller

for guiding cables and auxiliary and winching wires, galvanized steel

nominal width	weight	art.-no.
DN 28	1.7 kg	105101
DN 35	1.8 kg	105102
DN 40	1.9 kg	105103

Rope Protection Roller



Rope protection Roller for auxiliary and winching wires

heavy duty, supported steel roller, galvanized steel

nominal width	weight	art.-no.
DN 100	4.7 kg	105100



Manhole Cover Lifters

effortless & problem-free handling



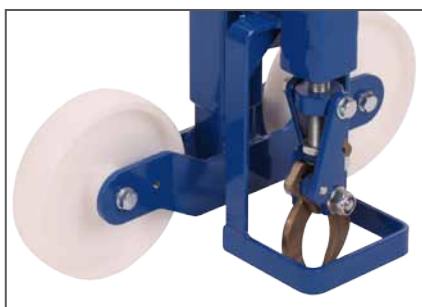
Extract from the german **Accident Prevention Regulation:**

„... for safe lifting and replacing of manhole covers suitable implements must be provided from the contractor and are to be used by the insured ... opening of manhole covers must be accomplished with **appropriate manhole cover lifting devices**“.

Suitable tools are **KATIMEX® Manhole Cover Lifters**.

NEW - Heavy manhole covers can be lifted easily with the improved, **portable Manhole Cover Lifter**. The **increased lifting height** and the **new safety protection system** allows secure and fast working. After lifting, the manhole cover is moved out of the working area. The manhole cover can be replaced quickly in the same way.

The **Manhole Cover Lifting Tongs** has been improved as well. The special shaped device is available in two different handle lengths.



Manhole Cover Lifters

Manhole Cover Lifter



Manhole Cover Lift Keys for branch boxes

types	weight	art.-no.
with hook	0.60 kg	105112
with trapezoid end	0.65 kg	105113
with lateral rectangular end	0.60 kg	105114
with double-sided rectangular end	0.60 kg	105115

Manhole Cover Lifter



Manhole Cover Lifting Tong

for lifting of tight manhole covers, light weight und robust steel construction

height of handle	weight	art.-no.
500 mm	5.3 kg	105130
700 mm	6.0 kg	105131

Manhole Cover Lifter



Wheeled Manhole Cover Lifter

for lifting of tight and heavy manhole covers
robust steel construction,
two devices needed for application!

specified lifting force per device

lifting height	traverse path _{max.}	lifting force	weight	art.-no.
260 mm	280 mm	6 kN	20 kg	107054